

Sustainable Interior Design: Strategies for Eco-Friendly Spaces

Monis Khan

E-mail: monis_khan3@yahoo.com

Abstract

This research explores the integration of sustainable practices in interior design, focusing on innovative strategies and their impact on both environmental performance and occupant well-being. The study employs a qualitative research methodology, including five real-world case studies and interviews with industry professionals, to understand how sustainability principles are applied in contemporary design projects. The primary aim is to identify effective strategies for creating eco-friendly spaces that balance functionality, aesthetics, and environmental stewardship. The five case studies—Google’s Bay View Campus, The Edge, The Bullitt Center, The Eden Project, and The Cactus Dome—serve as exemplars of various sustainable design approaches. Each case study provides insights into different aspects of sustainable design, including energy efficiency, material sustainability, water management, and biophilic design. For instance, Google’s Bay View Campus features biophilic design and energy-positive systems, while The Edge incorporates smart building technology and high-performance insulation. The Bullitt Center is known for its net-zero energy and water conservation practices, and The Eden Project emphasizes innovative design solutions and educational outreach. The Cactus Dome highlights sustainable materials and water efficiency in residential design. Interviews with design professionals offer additional perspectives on the implementation of sustainable practices. Key themes emerging from the interviews include innovative design solutions, energy efficiency and performance, the use of sustainable materials, water management, biophilic design, educational and outreach programs, smart technology integration, and challenges in sustainable design. These themes reflect the complex interplay between various design elements and their contributions to achieving sustainability goals. The thematic analysis reveals that innovative design solutions, such as geodesic domes and green roofs, play a crucial role in enhancing sustainability by improving resource efficiency and reducing environmental impact. Energy efficiency and performance are central to reducing operational costs and minimizing carbon footprints, with technologies like high-performance HVAC systems and renewable energy sources being critical components. Sustainable materials contribute to resource conservation and waste reduction, while effective water management practices address water scarcity and minimize environmental impact. Biophilic design, which integrates natural elements to improve occupant well-being, is increasingly recognized as a significant factor in sustainable interior design. Educational and outreach programs further support sustainability by raising public awareness and fostering a culture of environmental stewardship. The integration of smart technology optimizes building performance and resource management, while overcoming challenges such as balancing aesthetics with functionality and managing client expectations is essential for successful implementation. Overall, this research highlights the importance of a holistic approach to sustainable interior design, combining innovative solutions, energy efficiency, material sustainability, and occupant well-being. The findings underscore the need for interdisciplinary collaboration and ongoing education to advance sustainability in design practices. By synthesizing insights from case studies and expert interviews, the study provides valuable guidance for designers seeking to create eco-friendly spaces that meet both environmental and human needs.

Keywords: Sustainable Interior Design, Innovative Design Solutions, Energy Efficiency, Biophilic Design, Smart Technology

Introduction

1.1. Background

The concept of sustainable interior design has evolved significantly in response to growing environmental concerns and a heightened awareness of resource conservation. As the impacts of climate change become increasingly apparent, the need for design practices that minimize environmental footprints while enhancing the quality of life has never been more urgent (Hartini et al., 2020). This necessity is driven by the realization that traditional design approaches often prioritize aesthetics and functionality at the expense of environmental sustainability. The challenge, therefore, is to create interior spaces that are not only visually appealing and functional but also align with principles of sustainability (Alimin et al., 2021). Interior design, as a discipline, encompasses the creation and enhancement of indoor environments to support the needs and well-being of occupants. Traditionally, the focus of interior design has been on aesthetics, comfort, and functionality. However, the growing environmental crisis has prompted a shift towards incorporating sustainability into design practices. This shift is influenced by several factors, including increased awareness of climate change, depletion of natural resources, and the need to reduce greenhouse gas emissions. Sustainable interior design seeks to address these challenges by integrating environmentally friendly practices into the design and construction of indoor spaces (LI and BINTI HARON, 2024). This involves selecting materials with low environmental impact, optimizing energy and water use, and creating spaces that contribute positively to the health and well-being of occupants. The principles of sustainable design are rooted in the broader context of environmental sustainability, which encompasses reducing waste, conserving resources, and promoting a circular economy

(Park and Kang, 2022). The rationale for focusing on sustainable interior design is multifaceted. Firstly, the construction and operation of buildings account for a significant portion of global energy consumption and greenhouse gas emissions. As buildings continue to be developed and renovated, incorporating sustainable practices into interior design can play a crucial role in mitigating these environmental impacts (Khan et al., 2021). By optimizing energy efficiency, utilizing sustainable materials, and implementing water-saving technologies, interior designers can contribute to a reduction in the overall environmental footprint of buildings (Abdel Qader, 2023). Secondly, there is an increasing demand from clients and stakeholders for environmentally responsible design solutions. As public awareness of environmental issues grows, individuals and organizations are seeking design practices that reflect their values and commitment to sustainability. This shift in client expectations creates an opportunity for interior designers to differentiate themselves by offering innovative and eco-friendly design solutions. Additionally, the integration of sustainable design principles is aligned with regulatory requirements and industry standards that increasingly emphasize environmental responsibility. Many countries and regions have established building codes and certification programs that mandate or encourage sustainable practices. Adhering to these standards not only ensures compliance but also enhances the credibility and marketability of design projects. Furthermore, sustainable interior design has direct benefits for occupants. Environments that prioritize sustainability often result in improved indoor air quality, better natural lighting, and more comfortable living conditions. These factors contribute to the overall health and well-being of individuals, making sustainable design a critical aspect of creating quality living and working spaces.

1.1.1. Overview of Sustainable Interior Design

Sustainable interior design is a multidisciplinary approach that integrates environmental, social, and economic considerations into the design of indoor spaces. This practice aims to create environments that are not only aesthetically pleasing and functional but also minimize negative impacts on the environment and promote the well-being of occupants. At its core, sustainable interior design involves the thoughtful selection of materials, systems, and processes that support environmental stewardship. This includes choosing materials that are renewable, recyclable, or have low environmental impact, such as reclaimed wood, low-VOC paints, and energy-efficient fixtures. The design process also considers energy and water efficiency, incorporating systems like LED lighting, high-efficiency HVAC systems, and water-saving fixtures to reduce resource consumption and operational costs. In addition to material and resource considerations, sustainable interior design emphasizes the health and comfort of occupants. This involves ensuring good indoor air quality, optimizing natural lighting, and creating spaces that enhance psychological and physical well-being. For example, incorporating biophilic design elements—such as natural plants, green walls, and ample daylight—can improve mood, reduce stress, and boost productivity. Sustainable interior design also addresses the lifecycle of materials and products, from sourcing and manufacturing to disposal and recycling. By focusing on the full lifecycle impact, designers can help reduce waste and encourage practices that contribute to a circular economy. This approach not only minimizes environmental impact but also promotes the longevity and durability of design elements, reducing the need for frequent replacements and renovations. Overall, sustainable interior design is a holistic approach that integrates environmental responsibility with the needs and preferences of occupants. It represents a shift from traditional design practices towards

a more conscientious and forward-thinking approach that aligns with global sustainability goals.

1.1.2. Importance of Eco-Friendly Spaces

Eco-friendly spaces, or green interiors, are increasingly recognized as essential for addressing environmental challenges and enhancing the quality of life for occupants. The importance of these spaces is underscored by several key factors:

Environmental Impact: Eco-friendly spaces play a crucial role in reducing the environmental footprint of buildings. Traditional design practices often lead to significant resource consumption, waste generation, and pollution. By adopting sustainable practices, such as using energy-efficient systems, sustainable materials, and water-saving technologies, designers can significantly mitigate these impacts. This is especially important given the increasing urgency to address climate change and resource depletion.

Health and Well-being: The design of indoor environments has a direct impact on the health and well-being of occupants. Eco-friendly spaces often incorporate features that improve indoor air quality, natural lighting, and thermal comfort. For instance, using low-emission materials and ensuring proper ventilation can reduce exposure to harmful pollutants, while optimizing natural light can enhance mood and productivity. By creating healthier indoor environments, eco-friendly spaces contribute to the overall well-being of individuals.

Economic Benefits: Implementing sustainable design practices can result in long-term economic benefits. While the initial cost of green design elements may be higher, the savings on energy and water bills, as well as the reduced need for maintenance and repairs, can offset these costs over time. Additionally, sustainable design can enhance the value of a property, attract environmentally conscious clients, and comply with increasingly stringent regulations and standards.

Client and Market Demand: There is a growing demand from clients and consumers

for eco-friendly spaces that reflect their values and commitment to sustainability. As public awareness of environmental issues increases, more individuals and organizations are seeking design solutions that align with their environmental goals. Meeting this demand not only satisfies client expectations but also positions designers as leaders in the field of sustainable design.

Regulatory Compliance: Many regions and countries have established regulations and standards that promote or require sustainable practices in building design. By incorporating eco-friendly elements, designers can ensure compliance with these regulations and benefit from incentives such as tax credits or green certifications. This not only helps in achieving regulatory goals but also demonstrates a commitment to responsible design practices.

1.2. Research Problem

The core problem addressed by this research is the challenge of effectively integrating sustainable design principles into interior design practices. As environmental concerns continue to escalate, the design community faces increasing pressure to adopt practices that mitigate negative impacts on the environment while meeting the needs of clients and occupants. The complexity of this challenge lies in balancing multiple objectives—such as aesthetic appeal, functionality, and environmental stewardship—within the constraints of real-world projects. Integrating sustainable practices into interior design involves navigating a range of factors that can complicate the process. For instance, designers must consider the environmental impact of materials, energy efficiency, water conservation, and waste management. Each of these elements requires careful selection and coordination to ensure that they work harmoniously within the design. The challenge is further compounded by the need to maintain aesthetic and functional standards, which can sometimes conflict with sustainable goals. For example, sustainable materials may not always align with a desired aesthetic or may present design limitations that need to be addressed

creatively. Another significant aspect of the research problem is managing client expectations and budget constraints while implementing sustainable design solutions. Clients often prioritize cost-effectiveness and may be hesitant to invest in green technologies or materials that are perceived as expensive. Designers must navigate these constraints by finding cost-effective sustainable solutions that meet client needs without compromising on quality or performance. This balancing act requires not only technical knowledge but also the ability to communicate the value of sustainable practices to clients and justify the long-term benefits. A key challenge in sustainable interior design is the gap in knowledge and awareness among designers, clients, and stakeholders. Despite the growing availability of sustainable materials and technologies, there is often a lack of understanding about how to effectively incorporate these into design projects. This knowledge gap can lead to suboptimal design choices or missed opportunities for sustainability. Furthermore, designers may face difficulties in staying updated with rapidly evolving sustainable practices and technologies, which can impact their ability to implement the most current and effective solutions.

1.2.1. Identifying Gaps in Current Knowledge

Identifying gaps in current knowledge is crucial for advancing sustainable interior design practices. Despite the increasing awareness and implementation of sustainability in design, several knowledge gaps persist that hinder the effective integration of sustainable principles into interior design. One significant gap is the limited understanding of sustainable practices among many interior designers. While there is growing interest in sustainability, not all designers are well-versed in the latest sustainable materials, technologies, and methodologies. This lack of in-depth knowledge can lead to the use of outdated or less effective sustainable solutions.

Additionally, the rapid evolution of sustainable technologies and materials means that designers must continuously update their knowledge, which can be challenging without access to ongoing education and resources.

Another critical gap is the difficulty in measuring and evaluating the effectiveness of sustainable design solutions. There is often a lack of standardized metrics and tools to assess the impact of sustainable features on energy performance, environmental impact, and occupant well-being. Without reliable methods for measurement and evaluation, it is challenging to quantify the benefits of sustainable design practices and make data-driven decisions. This gap can result in missed opportunities for optimization and improvement, as well as difficulties in demonstrating the value of sustainable design to clients and stakeholders. Current knowledge also reveals gaps in effective integration strategies for sustainable design within existing design practices. Many designers struggle with incorporating sustainability into their work in a way that balances environmental, aesthetic, and functional considerations. There is often a lack of comprehensive guidelines or best practices for integrating sustainable principles seamlessly into the design process. This can lead to piecemeal implementation rather than a holistic approach, which is essential for achieving significant environmental benefits.

Research on the impact of sustainable design features on occupant health and well-being is still developing. While there is evidence that certain sustainable practices contribute to improved indoor air quality and comfort, more research is needed to understand the full range of benefits and potential trade-offs. This includes examining how different sustainable design elements interact and affect various aspects of occupant well-being, such as mental health, productivity, and overall quality of life. The dissemination of knowledge and training opportunities related to sustainable design is another area of concern. There is a need for

more accessible and targeted education for interior designers, architects, and other stakeholders on sustainable design practices. This includes workshops, certifications, and resources that provide practical, actionable information on implementing sustainability effectively. Without adequate training and resources, designers may struggle to apply sustainable practices in their projects.

1.2.2. Relevance to Stakeholders

The relevance of sustainable interior design to stakeholders is multifaceted, impacting a range of individuals and organizations involved in or affected by the design process. Understanding this relevance is crucial for driving the adoption of sustainable practices and ensuring that design solutions align with stakeholder needs and expectations.

Clients and End Users

For clients and end users, sustainable interior design offers significant benefits. These include reduced operational costs through energy and water savings, enhanced indoor air quality, and improved occupant comfort and well-being. Clients who prioritize sustainability often seek design solutions that reflect their values and commitment to environmental stewardship. By addressing these needs, designers can enhance client satisfaction and loyalty, while also positioning themselves as leaders in the field of sustainable design.

Designers and Architects

For designers and architects, sustainable interior design presents both challenges and opportunities. On one hand, integrating sustainability into design practices requires additional expertise, resources, and creativity. On the other hand, it offers opportunities for professional growth, differentiation in the market, and alignment with evolving industry standards and regulations. Embracing sustainable practices can enhance a designer's reputation and open up new avenues for collaboration and innovation.

Regulatory Bodies and Standards Organizations

Regulatory bodies and standards organizations play a critical role in shaping the framework for sustainable design through codes, certifications, and guidelines. Their relevance lies in establishing the benchmarks and requirements that drive the adoption of sustainable practices. By setting clear standards and providing incentives for compliance, these organizations can influence the design community's approach to sustainability and ensure that practices are aligned with broader environmental and social goals.

Developers and Building Owners

Developers and building owners have a vested interest in sustainable interior design due to its potential impact on property value, marketability, and long-term operational costs. Sustainable design features can enhance the attractiveness of properties, attract environmentally conscious tenants, and qualify for green certifications that boost market appeal. For developers and owners, investing in sustainable design can lead to substantial financial benefits and alignment with corporate sustainability goals.

Educational and Research Institutions

Educational and research institutions are key stakeholders in advancing sustainable interior design knowledge and practices. They contribute through research, innovation, and the development of educational programs that equip future designers with the skills and knowledge needed to implement sustainable solutions. These institutions play a vital role in bridging knowledge gaps, disseminating best practices, and fostering a culture of sustainability within the design profession.

1.3. Research Objectives

The research objectives for exploring "Sustainable Interior Design: Strategies for Eco-Friendly Spaces" are designed to address the identified knowledge gaps and challenges in the field of sustainable interior design.

These objectives aim to provide a comprehensive understanding of effective strategies, practices, and innovations in creating environmentally responsible interior spaces. The objectives are as follows:

1. To Identify and Analyze Key Strategies for Sustainable Interior Design
2. To Evaluate the Impact of Sustainable Design Features on Occupant Well-Being
3. To Explore Challenges and Barriers to Implementing Sustainable Design Practices
4. To Assess the Role of Innovative Technologies and Materials in Sustainable Design
5. To Investigate the Influence of Regulatory Standards and Certifications on Sustainable Design
6. To Identify Best Practices and Develop Recommendations for Sustainable Interior Design

1.3.1. Identifying Gaps in Current Knowledge

Limited Integration of Emerging Technologies

While many sustainable design practices have been established, there is a noticeable gap in the integration of emerging technologies. The rapid evolution of technology offers new opportunities for improving sustainability in interior design, such as advanced smart building systems, energy-efficient appliances, and innovative materials. However, the adoption of these technologies is often slow due to a lack of awareness, understanding, or practical application in design projects. Bridging this gap involves not only staying abreast of technological advancements but also understanding how they can be effectively integrated into existing design frameworks.

Lack of Standardized Metrics for Sustainability

Another significant gap is the absence of standardized metrics and benchmarks for evaluating the sustainability of interior design projects. Currently, there is no universal system for measuring and comparing the

effectiveness of various sustainable design elements, such as energy efficiency, material sustainability, and water conservation. This lack of standardized evaluation tools makes it challenging to assess the overall impact of sustainable design practices and to make data-driven decisions. Developing standardized metrics would help designers, clients, and stakeholders better understand and quantify the benefits of sustainable design.

Inadequate Focus on Occupant Experience

While sustainable design often focuses on environmental impacts, there is a gap in understanding how these practices affect the occupant experience. Research on the direct effects of sustainable design elements on health, comfort, and productivity is still emerging. For example, the impact of natural lighting, air quality, and green spaces on mental and physical well-being is not fully understood. Addressing this gap involves conducting more in-depth research to explore how sustainable design features influence occupant satisfaction and performance, thereby ensuring that sustainability efforts align with user needs.

Challenges in Balancing Aesthetics and Functionality

Designers frequently face challenges in balancing sustainability with aesthetic and functional requirements. Many sustainable solutions may be perceived as compromising on design quality or user experience, creating a gap between the desire for eco-friendly practices and the practicalities of design. This challenge is compounded by the need for innovative approaches that maintain aesthetic appeal while achieving sustainability goals. Research is needed to develop strategies and guidelines that help designers integrate sustainability without sacrificing design integrity.

Insufficient Training and Education

There is a notable gap in the availability of specialized training and education for interior designers regarding sustainable practices. While general awareness of sustainability is growing, many designers lack detailed knowledge and skills required to implement

effective eco-friendly solutions. This gap in education and training can result in inconsistencies in applying sustainable practices and a lack of innovation in design approaches. Addressing this gap involves creating more comprehensive educational programs, workshops, and resources focused on sustainable interior design.

1.3.2. Relevance to Stakeholders

Clients and End Users

For clients and end users, sustainable interior design offers substantial benefits that extend beyond environmental considerations. Clients are increasingly seeking designs that align with their values, including a commitment to sustainability. Sustainable design features, such as energy-efficient systems and healthy indoor environments, can lead to reduced operational costs, improved indoor air quality, and enhanced comfort and well-being. Understanding these benefits helps designers and clients make informed decisions that reflect both environmental and personal priorities.

Designers and Architects

Designers and architects are directly impacted by sustainable interior design through their project responsibilities and professional development. Embracing sustainable practices allows designers to stay competitive in a rapidly evolving market, where clients are demanding more environmentally responsible solutions. Additionally, integrating sustainability into design offers opportunities for creative problem-solving and innovation. Recognizing the relevance of sustainable design helps designers align their skills and practices with current industry trends and client expectations.

Regulatory Bodies and Standards Organizations

Regulatory bodies and standards organizations play a pivotal role in shaping the framework for sustainable design through building codes, certifications, and guidelines. Their relevance lies in setting standards that drive compliance and promote best practices. Understanding how these regulations influence design

practices helps ensure that projects meet legal and certification requirements, thereby facilitating the successful implementation of sustainable solutions. Engaging with regulatory bodies can also provide insights into upcoming standards and opportunities for influencing policy development.

Developers and Building Owners

Developers and building owners are motivated by the potential economic benefits and marketability of sustainable design. Green building features can enhance property value, attract tenants, and qualify for incentives or certifications that boost market appeal. For developers and owners, sustainable design represents an investment in long-term value and operational efficiency. Understanding these benefits helps in making strategic decisions about incorporating sustainable features into new developments and renovations.

Educational and Research Institutions

Educational and research institutions are essential for advancing knowledge and practice in sustainable interior design. These institutions contribute through research, innovation, and the development of educational programs. By addressing knowledge gaps and disseminating best practices, they play a critical role in shaping the future of sustainable design. Engaging with these institutions helps ensure that new developments and innovations are incorporated into design education and practice, fostering a culture of continuous improvement.

1.4. Research Questions

- 1) What Are the Core Strategies for Implementing Sustainable Interior Design?
- 2) How Do Sustainable Design Features Affect Occupant Well-Being?
- 3) What Are the Common Challenges and Barriers in Integrating Sustainable Design Practices?
- 4) How Do Innovative Technologies and Materials Contribute to Sustainable Interior Design?

- 5) What Is the Influence of Regulatory Standards and Certification Programs on Sustainable Design Practices?
- 6) What Are the Best Practices for Integrating Sustainability into Interior Design Projects?
- 7) How Do Educational and Research Institutions Contribute to Advancing Sustainable Interior Design?
- 8) What Are the Economic and Market Benefits of Adopting Sustainable Interior Design Practices?

1.5. Scope of the Study

The scope of this study encompasses a detailed examination of sustainable interior design, focusing on strategies, practices, and impacts associated with creating eco-friendly spaces. By defining the scope, the research aims to establish clear boundaries and parameters for the investigation, ensuring that the study remains focused and relevant. The scope is delineated across several dimensions, including the subject matter, geographical context, methodologies, and specific areas of inquiry.

Subject Matter

The primary subject matter of this study is sustainable interior design, which involves designing interior spaces that are environmentally responsible and resource-efficient throughout their life cycle. This includes the selection of materials, energy-efficient systems, waste reduction practices, and the incorporation of biophilic design elements. The study will investigate various strategies and techniques used to achieve sustainability in interior design, analyze their effectiveness, and assess their impact on both environmental performance and occupant well-being.

Geographical Context

The geographical context of this study is global, with a particular emphasis on case studies and examples from various regions. While the research may include examples from different parts of the world, it will pay special

attention to projects that are renowned for their sustainable design practices, regardless of their location. This global perspective allows for a broader understanding of sustainable design practices and their applicability across different climates, cultures, and regulatory environments.

Methodologies

The study employs a qualitative research methodology, which includes case studies and interviews with industry professionals. The case studies provide real-world examples of sustainable interior design projects, highlighting successful strategies and practices. Interviews with designers, architects, and other stakeholders offer insights into their experiences, challenges, and perspectives on sustainable design. This combination of methods allows for a comprehensive exploration of the topic, providing both theoretical and practical insights.

Specific Areas of Inquiry

1. **Effective Strategies and Techniques:** Identifying and analyzing the strategies and techniques that are most effective in achieving sustainability in interior design projects.
2. **Impact on Occupant Well-Being:** Evaluating how sustainable design features affect the health, comfort, and productivity of occupants.
3. **Challenges and Barriers:** Examining the common challenges and barriers faced by designers in implementing sustainable practices and proposing solutions to overcome these obstacles.
4. **Technological and Material Innovations:** Investigating the role of emerging technologies and materials in enhancing sustainable design and their contribution to improved environmental performance.
5. **Regulatory Standards and Certifications:** Analyzing the influence of building codes, green

certifications, and industry guidelines on sustainable design practices.

6. **Best Practices:** Identifying best practices for integrating sustainability into interior design projects based on insights from case studies and interviews.
7. **Educational Contributions:** Exploring the role of educational and research institutions in advancing the field of sustainable interior design.
8. **Economic and Market Benefits:** Assessing the financial and market advantages of adopting sustainable design practices.

1.5.1. Delimitations

Focus on Sustainable Interior Design

The study is specifically centered on sustainable interior design, excluding other aspects of sustainability such as exterior architectural design or urban planning. This focus allows for an in-depth exploration of practices and strategies relevant to interior spaces, but it does not encompass broader architectural or urban sustainability issues.

Qualitative Methodology

The research employs a qualitative methodology, including case studies and interviews, to gather detailed insights into sustainable interior design. This choice of methodology means that the study will not include quantitative analysis or statistical evaluations. The qualitative approach is chosen to explore in-depth experiences, perceptions, and practices rather than producing generalizable numerical data.

Selection of Case Studies

The study includes selected case studies from various regions, emphasizing projects known for their innovative sustainable design features. The choice of case studies is deliberate and based on their relevance to the research questions. However, it does not cover all possible examples of sustainable design, which may limit the breadth of the findings to the selected cases.

Interview Participants

Interviews are conducted with a specific group of professionals, including designers and architects, who have experience in sustainable interior design. The selection criteria for these participants are based on their expertise and involvement in relevant projects. This delimitation means that the perspectives of other stakeholders, such as clients or building users, are not included in the research.

1.5.2. Exclusions

Non-Interior Design Aspects

The study excludes aspects of sustainability that are not directly related to interior design, such as site planning, landscape architecture, and building systems outside the interior context. This exclusion helps concentrate on the specific practices and impacts of interior design within the broader field of sustainability.

Quantitative Data

The research does not include quantitative data or statistical analysis. Instead, it relies on qualitative methods to explore the nuances of sustainable interior design. This means that the study will not provide statistical trends or numerical comparisons but will offer detailed qualitative insights.

Limited Geographic Focus

Although the study considers case studies from various regions, it does not cover every geographical area in equal depth. Some regions may be underrepresented, particularly those with less available data or fewer prominent examples of sustainable interior design. This geographic focus aims to provide a representative sample but does not encompass a global overview of all possible sustainable design practices.

Specific Technological Focus

The study does not delve deeply into all emerging technologies related to sustainability but focuses on those that are directly applicable to interior design. Technologies such as advanced HVAC systems, smart lighting, and energy-efficient materials are

included, but other technological innovations outside these areas are not addressed in detail.

Broader Industry Trends

The research focuses specifically on sustainable interior design rather than broader industry trends or global sustainability movements. While the study may touch upon related trends, it does not aim to provide a comprehensive analysis of all industry-wide sustainability practices or movements.

Literature Review

2.1. Definition of Sustainable Interior Design

Sustainable Interior Design is a multidisciplinary approach that integrates principles of environmental stewardship, resource efficiency, and human well-being into the design of interior spaces. At its core, sustainable interior design seeks to create spaces that not only minimize negative environmental impacts but also enhance the quality of life for occupants (Iftekhara and Prajapati, 2023). This approach encompasses a range of practices and considerations aimed at reducing the ecological footprint of interior environments while promoting health, comfort, and functionality.

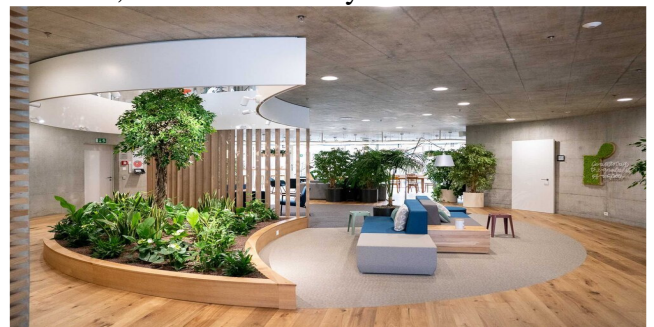


Figure 1 Sustainable Interior Design
Environmental Responsibility: This principle focuses on minimizing the environmental impact of interior spaces by using sustainable materials, reducing waste, and conserving energy and water (Rasheed, 2023). Sustainable interior design advocates for the selection of materials that are recycled, renewable, or have a low environmental impact. Additionally, it emphasizes the

importance of designing spaces that improve energy efficiency and reduce resource consumption.

Human Well-being: Sustainable interior design prioritizes the health and comfort of occupants. This includes considerations such as indoor air quality, natural lighting, acoustics, and ergonomics. By creating environments that support physical and mental well-being, sustainable interior design enhances the overall quality of life for users.

Lifecycle Thinking: This approach involves considering the entire lifecycle of interior materials and products, from production and use to disposal. Sustainable interior design evaluates the long-term performance and environmental impact of materials, aiming to select options that are durable, low-maintenance, and recyclable (Kineber et al., 2023).

Integration with Nature: Sustainable interior design often incorporates biophilic elements that connect occupants with nature. This can include features such as green walls, natural materials, and designs that maximize natural light. By fostering a connection to the natural environment, sustainable design contributes to a more harmonious and restorative interior experience (Yousrallah Mohamed, 2020).

Resource Efficiency: This principle focuses on optimizing the use of resources, including materials, energy, and water. Sustainable interior design promotes efficient use of these resources through strategies such as modular design, adaptive reuse, and energy-efficient systems.

Scope and Implementation

Material Selection: Choosing materials with low environmental impact, such as recycled, reclaimed, or rapidly renewable resources. This also involves evaluating the environmental certifications and manufacturing processes of products.

Energy and Water Efficiency: Incorporating technologies and design strategies that enhance energy efficiency and water conservation, such as LED lighting, high-

efficiency HVAC systems, and water-saving fixtures.

Indoor Environmental Quality: Enhancing air quality and comfort through the use of non-toxic materials, adequate ventilation, and natural lighting.

Waste Reduction: Minimizing construction and renovation waste through recycling programs, design for disassembly, and efficient material use.

2.1.1. Historical Context

The concept of sustainable interior design has evolved significantly over time, shaped by broader environmental movements and advances in building technologies. Historically, interior design focused primarily on aesthetics and functionality, with little regard for environmental impact or sustainability (Abdullah et al., 2023). However, several key developments have driven the shift towards more sustainable practices in interior design.

Early Environmental Awareness

The roots of sustainable design can be traced back to the early 20th century when environmental awareness began to grow. The conservation movement of the 1960s and 1970s, spurred by the publication of Rachel Carson's "Silent Spring" and the first Earth Day in 1970, highlighted the environmental degradation caused by human activities (Ashour et al., 2021). These events catalyzed a shift in societal values, emphasizing the need for more responsible use of natural resources.

Energy Crises and the Rise of Green Building

The energy crises of the 1970s further underscored the importance of energy efficiency and resource conservation. This period saw the emergence of the green building movement, which advocated for buildings that were not only energy-efficient but also environmentally responsible (Mohamad et al., 2020). The development of the Leadership in Energy and Environmental Design (LEED) certification in the late 1990s by the U.S. Green Building Council (USGBC) marked a significant milestone, establishing a

standardized framework for assessing and certifying the sustainability of buildings (Su, 2021).

Integration into Interior Design

As the principles of green building gained traction, they began to influence interior design practices. The focus shifted towards creating interior spaces that were not only aesthetically pleasing and functional but also environmentally sustainable. This integration was driven by a growing recognition of the impact that interior environments have on both the natural environment and human health (Wang et al., 2023). Designers began to explore the use of sustainable materials, energy-efficient lighting, and indoor environmental quality improvements.

2.1.2. Current Definitions and Standards

Today, sustainable interior design is defined by a set of principles and standards that guide the creation of environmentally responsible and healthy interior spaces. These definitions and standards are shaped by various organizations, certifications, and industry practices that aim to promote sustainability in interior design (Ajabli et al., 2023)

Definitions of Sustainable Interior Design

Sustainable interior design is generally defined as a holistic approach to designing interior spaces that minimize environmental impact, promote resource efficiency, and enhance human well-being. This involves considering the entire lifecycle of materials and products, from production and use to disposal, and selecting options that reduce waste, conserve resources, and create healthy indoor environments (Gupta, 2020).

Key Standards and Certifications

Several standards and certifications have been developed to provide guidelines and benchmarks for sustainable interior design. These include:

LEED (Leadership in Energy and Environmental Design): Administered by the USGBC, LEED certification provides a comprehensive framework for assessing the sustainability of buildings, including their interior spaces. It evaluates factors such as

energy and water efficiency, materials selection, indoor environmental quality, and overall environmental impact.

WELL Building Standard: The WELL Building Standard focuses specifically on human health and well-being in the built environment. It addresses aspects such as air quality, water quality, lighting, fitness, comfort, and mental health, promoting interiors that enhance occupant health and productivity (Warren et al., 2022).

BREEAM (Building Research Establishment Environmental Assessment Method): Originating in the UK, BREEAM is a global standard that assesses the environmental performance of buildings. It includes criteria for sustainable materials, energy and water efficiency, waste management, and indoor environmental quality.

Living Building Challenge: This rigorous certification program challenges designers to create buildings that operate as cleanly, beautifully, and efficiently as nature's architecture. It encompasses a wide range of sustainability aspects, including materials, energy, water, equity, and beauty.

Industry Practices and Trends

In addition to formal certifications, sustainable interior design is guided by best practices and emerging trends within the industry. These include:

Biophilic Design: Incorporating natural elements and materials to enhance the connection between occupants and nature, improving well-being and productivity.

Circular Economy: Emphasizing the reuse and recycling of materials to create closed-loop systems that reduce waste and resource consumption.

Healthy Materials: Prioritizing materials that are non-toxic, low-emitting, and have minimal environmental impact.

Smart Technology: Integrating advanced technologies to optimize energy use, indoor environmental quality, and resource management.

2.2. Principles of Eco-Friendly Spaces

Creating eco-friendly spaces involves a set of principles aimed at reducing environmental impact, enhancing resource efficiency, and promoting occupant well-being. These principles guide the design, construction, and operation of interior environments to ensure they are sustainable and supportive of a healthier planet (Jaffe et al., 2020).

Energy Efficiency

Energy efficiency is a cornerstone of eco-friendly spaces. By optimizing energy use, these spaces minimize their carbon footprint and reduce operational costs. This can be achieved through various strategies, including:

Efficient HVAC Systems: Utilizing high-performance heating, ventilation, and air conditioning (HVAC) systems that consume less energy while maintaining optimal indoor climate conditions.

Energy-Efficient Lighting: Implementing LED lighting and smart lighting controls that adjust based on occupancy and natural light availability.

Insulation and Glazing: Enhancing building envelope performance with proper insulation and energy-efficient windows to reduce heating and cooling needs.

Renewable Energy Sources: Incorporating solar panels, wind turbines, and other renewable energy technologies to generate clean energy on-site.

Water Conservation

Water conservation is essential for eco-friendly spaces, addressing both water scarcity and reducing the environmental impact of water use. Effective water management strategies include:

Low-Flow Fixtures: Installing low-flow faucets, showerheads, and toilets to reduce water consumption.

Rainwater Harvesting: Capturing and storing rainwater for non-potable uses such as irrigation and toilet flushing.

Greywater Recycling: Reusing greywater from sinks, showers, and laundry for landscape irrigation and other non-potable applications.

Drought-Tolerant Landscaping: Designing landscapes with native and drought-resistant plants that require minimal irrigation.

Sustainable Materials

The selection of sustainable materials is crucial for minimizing the environmental impact of interior spaces. Sustainable materials are characterized by their low environmental footprint, recyclability, and minimal toxicity. Key considerations include:

Recycled and Reclaimed Materials: Using materials made from recycled content or reclaimed from previous uses to reduce waste and resource extraction.

Locally Sourced Materials: Selecting materials sourced locally to decrease transportation-related emissions and support local economies.

Rapidly Renewable Materials: Utilizing materials that regenerate quickly, such as bamboo and cork, to ensure resource sustainability.

Non-Toxic Finishes: Choosing paints, adhesives, and finishes that emit low levels of volatile organic compounds (VOCs) to improve indoor air quality.

Indoor Environmental Quality

Eco-friendly spaces prioritize indoor environmental quality to enhance occupant health and comfort. This involves managing factors such as air quality, lighting, and acoustics:

Air Quality: Ensuring good ventilation and using air filtration systems to maintain clean indoor air. Avoiding materials that off-gas harmful chemicals.

Natural Lighting: Maximizing the use of natural light through windows, skylights, and reflective surfaces to reduce reliance on artificial lighting and improve occupant well-being.

Acoustic Comfort: Designing spaces to minimize noise pollution and enhance acoustic comfort through sound-absorbing materials and thoughtful space planning.

Waste Reduction

Reducing waste throughout the lifecycle of a space, from construction to operation, is a key principle of eco-friendly design:

Construction Waste Management:

Implementing strategies to minimize waste during construction, such as prefabrication, modular construction, and recycling of construction debris.

Recycling Programs: Providing facilities and programs for recycling and composting to reduce waste sent to landfills.

Design for Disassembly: Designing spaces and systems that can be easily dismantled and reused or recycled at the end of their life.

Biophilic Design

Biophilic design integrates natural elements into interior spaces to enhance the connection between occupants and nature. This approach has been shown to improve mental and physical well-being:

Green Walls and Roofs: Incorporating plants into interior and exterior surfaces to improve air quality, reduce heat island effects, and provide aesthetic and psychological benefits.

Natural Materials: Using wood, stone, and other natural materials to create a calming and organic feel within the space.

Water Features: Including features such as fountains and aquariums to add a sense of tranquility and natural beauty.

Lifecycle Thinking

Lifecycle thinking involves considering the environmental impact of materials and systems throughout their entire lifecycle, from production to disposal:

Lifecycle Assessment (LCA): Conducting LCAs to evaluate the environmental impacts of materials and products over their lifespan and make informed choices.

Durability and Longevity: Choosing durable materials and products that require less frequent replacement and maintenance, reducing overall resource use and waste.

Community and Cultural Sensitivity

Eco-friendly spaces also respect and integrate local community values and cultural heritage:

Cultural Relevance: Designing spaces that reflect and honor the cultural heritage and identity of the local community.

Community Engagement: Involving local stakeholders in the design process to ensure

the space meets their needs and supports local sustainability goals.

2.2.1. Environmental Impact Reduction

Environmental impact reduction is a critical principle in sustainable interior design, focusing on minimizing the negative effects that buildings and interiors have on the natural environment. This can be achieved through various strategies:

Material Selection: Choosing sustainable, low-impact materials is essential. This includes using recycled and reclaimed materials, which reduce the need for new resource extraction and minimize waste. For example, reclaimed wood and recycled metal can be used in furniture and finishes, thereby decreasing the demand for virgin materials.

Energy Efficiency: Implementing energy-efficient systems and practices reduces the overall energy consumption of a space, thus lowering greenhouse gas emissions. This includes the use of high-efficiency HVAC systems, LED lighting, and appliances that meet or exceed energy efficiency standards. Additionally, designing for natural light and ventilation can significantly cut down on energy usage.

Water Conservation: Efficient water management practices help in reducing the consumption of this precious resource. This can be done through the installation of low-flow fixtures, the use of greywater recycling systems, and rainwater harvesting. Drought-tolerant landscaping also plays a crucial role in minimizing water usage.

Waste Reduction: Sustainable design also focuses on reducing waste at all stages of a building's lifecycle. This involves construction practices that minimize waste generation, implementing recycling and composting programs, and designing for disassembly, which allows building components to be reused or recycled at the end of their life.

Sustainable Landscaping: Incorporating native plants and sustainable landscaping practices reduces the need for irrigation, pesticides, and fertilizers, which can have

harmful environmental effects. Sustainable landscaping also helps in creating habitats for local wildlife and enhances biodiversity.

2.2.2. Resource Efficiency

Resource efficiency in sustainable interior design refers to the optimal use of materials, energy, and water to minimize waste and maximize performance. This principle aims to create spaces that use fewer resources while maintaining or improving functionality and comfort.

Energy Conservation: Efficient use of energy is a cornerstone of resource efficiency. This can be achieved through the integration of renewable energy sources, such as solar panels and wind turbines, which provide clean energy and reduce reliance on fossil fuels (Rojas Quezada and Jorquera, 2021). Additionally, smart building technologies, such as automated lighting and climate control systems, optimize energy use based on occupancy and environmental conditions.

Material Optimization: Selecting materials that are durable, require less maintenance, and have a long lifespan contributes to resource efficiency. This reduces the need for frequent replacements and repairs, ultimately conserving resources. The use of prefabricated and modular construction techniques also minimizes material waste and can significantly cut down on construction time and costs.

Water Efficiency: Efficient water use is achieved through the implementation of advanced plumbing systems that reduce water waste. Low-flow fixtures, dual-flush toilets, and water-efficient appliances are some examples of technologies that help in conserving water. Additionally, designing landscapes with xeriscaping principles—using drought-resistant plants and reducing lawn areas—can lead to significant water savings (Mariotti et al., 2020).

Lifecycle Thinking: Adopting a lifecycle approach in design ensures that all stages of a product's life, from extraction to disposal, are considered. This approach helps in selecting materials and systems that have lower environmental impacts over their entire

lifecycle, promoting resource conservation and efficiency.

Space Utilization: Efficient use of space can also contribute to resource efficiency. Designing multifunctional spaces that can adapt to different uses reduces the need for additional construction and resources. This approach not only saves materials but also optimizes the use of available space.

2.2.3. Health and Well-being

Health and well-being are paramount in sustainable interior design, focusing on creating environments that enhance the physical, mental, and emotional health of occupants. This principle addresses factors such as indoor air quality, natural light, acoustics, and biophilic design.

Indoor Air Quality: Good indoor air quality is essential for occupant health. This can be achieved by using non-toxic, low-VOC (volatile organic compounds) materials and finishes, which emit fewer harmful chemicals into the air. Proper ventilation systems, air purifiers, and the incorporation of plants can also improve air quality by removing pollutants and providing fresh air (Xu et al., 2021).

Natural Light: Access to natural light has been shown to improve mood, productivity, and overall well-being. Designing spaces with large windows, skylights, and reflective surfaces maximizes the use of natural light, reducing the need for artificial lighting during the day (Yu et al., 2020). This not only conserves energy but also creates a more pleasant and healthful environment.

Acoustic Comfort: Controlling noise levels is crucial for creating a comfortable and productive environment. This involves using sound-absorbing materials, designing layouts that minimize noise transfer, and incorporating acoustic panels or barriers. Reducing noise pollution can lead to better concentration, reduced stress, and improved overall well-being.

Biophilic Design: Integrating natural elements into the built environment—such as plants, natural materials, and water features—

enhances the connection between occupants and nature (Pavate et al., 2024). This connection has been shown to reduce stress, improve cognitive function, and promote overall health. Features like green walls, indoor gardens, and natural textures contribute to a biophilic design approach.

Ergonomics and Accessibility: Designing spaces that are ergonomic and accessible to all users is also important for health and well-being. This includes selecting furniture and layouts that support good posture and movement, as well as ensuring that spaces are accessible to people with disabilities. Ergonomic design helps prevent injuries and promotes a healthier lifestyle.

Thermal Comfort: Maintaining a comfortable indoor temperature is vital for occupant comfort and health. Sustainable design incorporates efficient heating and cooling systems, proper insulation, and passive design strategies to maintain optimal thermal conditions (Usman et al., 2023). This not only enhances comfort but also reduces energy consumption. By focusing on environmental impact reduction, resource efficiency, and health and well-being, sustainable interior design creates spaces that are not only environmentally responsible but also supportive of human health and comfort (Xue et al., 2020). These principles guide the creation of interiors that are sustainable, efficient, and conducive to a high quality of life.

2.3. Strategies for Sustainable Design

Sustainable design strategies are essential for creating built environments that minimize environmental impact, optimize resource efficiency, and enhance occupant well-being. These strategies encompass a wide range of practices and principles that can be applied throughout the design, construction, and operation phases of a project.

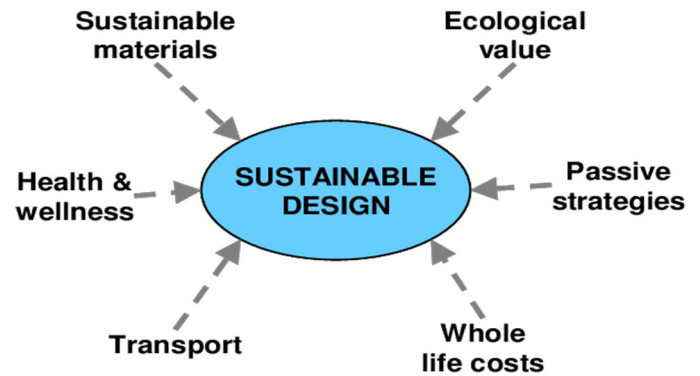


Figure 2 Strategies for Sustainable Design

Energy Efficiency

Energy efficiency is a cornerstone of sustainable design. Strategies to improve energy efficiency include:

Passive Design: Utilizing the building's orientation, layout, and materials to maximize natural light and ventilation. This reduces the need for artificial lighting and mechanical cooling and heating.

Insulation and Glazing: Installing high-quality insulation and energy-efficient windows to reduce heat loss in winter and heat gain in summer. Triple-glazed windows, for example, can significantly improve thermal performance.

Renewable Energy Integration: Incorporating renewable energy sources such as solar panels, wind turbines, or geothermal systems to generate clean energy on-site. This reduces reliance on fossil fuels and lowers greenhouse gas emissions.

Efficient HVAC Systems: Implementing high-efficiency heating, ventilation, and air conditioning (HVAC) systems that use less energy while maintaining comfortable indoor conditions. Advanced systems can be combined with smart thermostats for optimized performance.

Lighting Efficiency: Using LED lighting, which consumes less energy and has a longer lifespan compared to traditional incandescent bulbs. Incorporating daylighting strategies, such as skylights and light shelves, also reduces the need for artificial lighting.

Water Conservation

Water conservation strategies aim to reduce water usage and manage resources efficiently. Key approaches include:

Low-Flow Fixtures: Installing low-flow faucets, showerheads, and toilets to reduce water consumption without compromising performance.

Greywater Systems: Reusing greywater from sinks, showers, and laundry for non-potable purposes such as irrigation and toilet flushing. This reduces the demand for fresh water.

Rainwater Harvesting: Collecting and storing rainwater for use in irrigation, flushing toilets, and other non-potable applications. This system can significantly reduce the need for treated water.

Drought-Tolerant Landscaping: Using native and drought-resistant plants in landscaping to minimize irrigation needs. Xeriscaping, a landscaping method that reduces or eliminates the need for supplemental water, is an effective approach.

Efficient Irrigation Systems: Implementing drip irrigation and smart controllers that adjust watering schedules based on weather conditions and soil moisture levels to reduce water waste.

Sustainable Materials

Selecting sustainable materials is crucial for reducing the environmental impact of a building. Strategies include:

Recycled and Reclaimed Materials: Using materials that are recycled or reclaimed, such as reclaimed wood, recycled metal, and recycled-content insulation. This reduces waste and conserves resources.

Locally Sourced Materials: Choosing materials produced locally to reduce transportation emissions and support the local economy. Locally sourced materials often have a lower carbon footprint.

Low-VOC Materials: Utilizing paints, adhesives, and finishes with low levels of volatile organic compounds (VOCs) to improve indoor air quality and reduce health risks.

Rapidly Renewable Resources: Opting for materials made from rapidly renewable resources, such as bamboo, cork, and wool, which can be replenished quickly and sustainably.

Durable and Long-Lasting Materials: Selecting materials that are durable and require minimal maintenance. This extends the lifecycle of the materials and reduces the frequency of replacements.

Indoor Environmental Quality

Creating a healthy indoor environment is a key aspect of sustainable design. Strategies to enhance indoor environmental quality include:

Improved Ventilation: Designing buildings with effective ventilation systems to ensure a constant supply of fresh air. Mechanical ventilation can be supplemented with natural ventilation strategies.

Daylighting: Maximizing the use of natural light through strategic window placement, skylights, and light shelves. This reduces reliance on artificial lighting and enhances occupant well-being.

Acoustic Comfort: Using sound-absorbing materials and designing spaces to minimize noise pollution. Acoustic panels, carpeting, and strategic layout planning can improve acoustic comfort.

Thermal Comfort: Ensuring that indoor temperatures are maintained at comfortable levels through efficient HVAC systems, appropriate insulation, and passive design strategies.

Biophilic Design: Incorporating natural elements such as plants, water features, and natural materials to create a connection with nature. This approach has been shown to reduce stress and improve mental health.

2.3.1. Waste Reduction

Minimizing waste generation and managing waste responsibly are important for sustainable design. Strategies include:

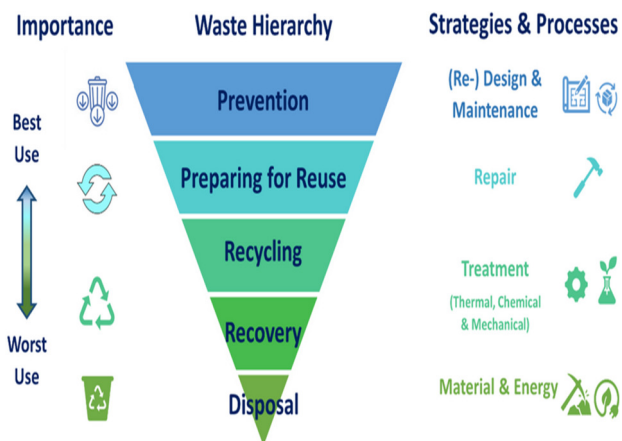


Figure 3 Waste Reduction

Construction Waste Management:

Implementing waste management plans during construction to reduce, reuse, and recycle waste materials. This can significantly reduce the amount of waste sent to landfills.

Design for Disassembly: Designing buildings and interiors in a way that allows for easy disassembly and reuse of components at the end of their lifecycle. This promotes a circular economy.

Recycling and Composting Programs: Establishing recycling and composting programs for occupants to manage waste effectively. Providing separate bins for different types of waste encourages responsible disposal.

Material Efficiency: Designing spaces efficiently to minimize the amount of material required. This includes optimizing building dimensions and using prefabricated components.

2.3.2. Materials and Resources

Materials and resources are fundamental to sustainable interior design, influencing the environmental impact and sustainability of a project from inception through its lifecycle. Selecting the right materials can significantly reduce a building's ecological footprint and contribute to healthier indoor environments.



Figure 4 Materials and Resources

Sustainable Sourcing: Prioritizing materials that are sustainably sourced is crucial. This includes using renewable resources like bamboo, which grows quickly and can be harvested with minimal environmental impact. Additionally, materials certified by organizations such as the Forest Stewardship Council (FSC) ensure that wood products come from responsibly managed forests that provide environmental, social, and economic benefits (Łatka and Świąciak, 2021).

Recycled Content: Incorporating materials with high recycled content helps divert waste from landfills and reduces the demand for virgin resources. Examples include recycled glass countertops, reclaimed wood flooring, and insulation made from recycled paper or denim. Using recycled materials not only conserves resources but also often requires less energy to produce compared to new materials.

Locally Sourced Materials: Using locally sourced materials can drastically reduce the carbon footprint associated with transportation. It also supports the local economy and ensures that materials are adapted to the local climate, which can enhance the building's performance and longevity.

Low-VOC and Non-Toxic Materials: Volatile organic compounds (VOCs) are harmful chemicals found in many building materials and finishes. Selecting low-VOC or

VOC-free paints, adhesives, and sealants improves indoor air quality and reduces health risks for occupants. Non-toxic materials, such as natural linoleum and wool carpets, further contribute to a healthier indoor environment.

Durability and Longevity: Choosing durable materials that require minimal maintenance and have a long lifespan reduces the need for frequent replacements and repairs. This not only conserves resources but also minimizes the environmental impact associated with manufacturing and transporting new materials (Hou and Wu, 2021). High-quality, long-lasting materials like stone, metal, and hardwood can withstand wear and tear and maintain their appearance and functionality over time.

2.3.3. Energy Efficiency

Energy efficiency is a cornerstone of sustainable design, directly impacting a building's operational costs and environmental footprint. Implementing energy-efficient strategies and technologies can significantly reduce energy consumption and greenhouse gas emissions.

Building Envelope: A well-designed building envelope minimizes energy loss and improves thermal performance. This includes high-quality insulation, energy-efficient windows, and air sealing to prevent drafts and heat loss. Triple-glazed windows and advanced insulation materials, such as aerogels, offer superior performance in maintaining indoor temperatures.

Passive Design Strategies: Utilizing passive design strategies can significantly reduce the need for mechanical heating and cooling. Orientation and layout of the building to maximize natural light and ventilation, along with features like overhangs, louvers, and shading devices, help control solar gain and promote natural cooling (Almalki et al., 2023).

Renewable Energy Systems: Integrating renewable energy systems such as solar panels, wind turbines, and geothermal heating and cooling can provide clean, sustainable energy. Photovoltaic panels convert sunlight into electricity, reducing reliance on fossil fuels

and lowering carbon emissions (Han et al., 2020). Geothermal systems use the stable temperature of the earth to provide heating and cooling, significantly reducing energy consumption.

Efficient HVAC Systems: Advanced HVAC systems, including heat pumps and energy recovery ventilators (ERVs), provide efficient heating, cooling, and ventilation. These systems are designed to use less energy while maintaining optimal indoor air quality and comfort. Smart thermostats and building management systems can further enhance efficiency by optimizing energy use based on occupancy and usage patterns.

Lighting Efficiency: Energy-efficient lighting, such as LED bulbs, uses significantly less energy than traditional incandescent bulbs and has a longer lifespan. Incorporating daylighting strategies, such as skylights and light tubes, can reduce the need for artificial lighting during the day (Ismaeil and Sobaih, 2022). Automated lighting controls, such as occupancy sensors and dimmers, help ensure that lights are only used when needed.

2.3.4. Waste Management

Effective waste management is essential for minimizing the environmental impact of construction and demolition activities. Implementing comprehensive waste management strategies helps reduce the amount of waste sent to landfills and promotes resource conservation.

Construction Waste Management: Developing a construction waste management plan is a critical first step. This plan outlines strategies for reducing, reusing, and recycling construction waste. Sorting waste on-site, using designated bins for different materials (e.g., wood, metal, concrete), facilitates recycling and ensures that materials are properly processed.

Design for Disassembly: Designing buildings and interiors with disassembly in mind allows components to be easily dismantled and reused or recycled at the end of their lifecycle. This approach promotes a circular economy and reduces the amount of waste generated.

Modular construction and the use of mechanical fasteners instead of adhesives are examples of design for disassembly.

Recycling and Composting Programs:

Establishing recycling and composting programs for occupants helps manage waste effectively during the building's operation. Providing clearly labeled bins for recyclable materials (e.g., paper, plastic, glass) and compostable waste encourages proper disposal and reduces the amount of waste sent to landfills.

Material Efficiency: Efficient use of materials reduces waste generation. This includes optimizing building dimensions to standard material sizes, reducing off-cuts and leftovers. Prefabrication and modular construction methods can also minimize waste by allowing precise manufacturing in controlled environments.

Lifecycle Assessment: Conducting a lifecycle assessment (LCA) of materials and products helps identify opportunities to reduce waste and environmental impact throughout the building's lifecycle. LCA considers the environmental impact of materials from extraction and production to use and disposal, guiding informed decisions about material selection and waste management (Alfuraty, 2020).

2.4. Previous Research and Findings

Understanding the foundation of sustainable interior design requires an exploration of previous research and findings in this field. Over the years, numerous studies have been conducted to investigate the principles, benefits, and challenges of sustainable design, contributing to a robust body of knowledge that informs current practices (Umoh et al., 2024).

Historical Evolution of Sustainable Design

Research: The concept of sustainable design has evolved significantly over the past few decades. Early research focused primarily on energy efficiency and the use of renewable resources. Publications from the 1970s and 1980s highlighted the importance of reducing energy consumption in buildings through better insulation, passive solar design, and the

adoption of renewable energy technologies (Aithal and Aithal, 2022). These initial studies laid the groundwork for understanding the environmental impact of building operations.

Material and Resource Efficiency: As awareness of environmental issues grew, research expanded to include the selection and use of materials. Studies in the 1990s and early 2000s emphasized the need for recycled and sustainably sourced materials in construction (Almusaed et al., 2023). For instance, research by Kibert (1994) highlighted the potential of using recycled content in building materials to reduce waste and environmental impact. Later studies, such as those by Trusty and Horst (2002), provided comprehensive assessments of the lifecycle impacts of different materials, promoting the adoption of sustainable materials in design practices.

Health and Well-Being: The relationship between sustainable design and occupant well-being has been a significant focus of research. Studies have shown that incorporating natural elements and improving indoor air quality can enhance occupant health and productivity (Mahmood et al., 2021). For example, a study by Heerwagen (2000) demonstrated that biophilic design elements, such as natural lighting and access to outdoor views, positively impact psychological and physiological well-being. This research has been instrumental in advocating for the integration of biophilic principles in sustainable design.

Energy Efficiency and Renewable Energy:

Advances in technology and building science have led to more sophisticated approaches to energy efficiency. Research by the National Renewable Energy Laboratory (NREL) and the U.S. Department of Energy (DOE) has provided critical insights into high-performance building design. Studies on net-zero energy buildings, such as those by Torcellini et al. (2006), have demonstrated the feasibility and benefits of buildings that generate as much energy as they consume. These findings have spurred the development of standards and certifications, such as LEED and the Living Building Challenge, that

promote energy-efficient design (Mwanzu et al., 2023).

Water Conservation and Management:

Water efficiency has also been a central theme in sustainable design research. Studies have explored various strategies for reducing water consumption, such as the use of low-flow fixtures, rainwater harvesting, and greywater recycling. Research by Gleick (1998) and more recent studies by the Water Research Foundation have highlighted the effectiveness of these strategies in conserving water resources and reducing the environmental impact of buildings.

Impact of Sustainable Design on Property Value:

Another important area of research has been the economic impact of sustainable design. Studies by Eichholtz et al. (2010) and Fuerst and McAllister (2011) have shown that green buildings often command higher property values and rental rates. These findings have provided compelling arguments for developers and property owners to invest in sustainable design, demonstrating that it can lead to significant financial benefits in addition to environmental and social advantages.

Challenges and Barriers: Despite the numerous benefits of sustainable design, research has also identified various challenges and barriers. Studies have pointed out issues such as higher upfront costs, lack of awareness, and resistance to change among stakeholders. For example, research by Hwang and Tan (2012) identified cost and lack of expertise as major barriers to the adoption of green building practices in the construction industry. Addressing these challenges requires continued research and the development of strategies to overcome them, such as education and training programs, financial incentives, and policy support.

2.4.1. Key Studies

The exploration of sustainable interior design is deeply rooted in several seminal studies that have shaped the field's evolution and current practices. These key studies have provided foundational insights into the principles,

benefits, and implementation of sustainable design strategies.

Kibert (1994) on Sustainable Building Materials:

One of the pioneering studies in sustainable design, Kibert's research emphasized the importance of using recycled and environmentally friendly materials in construction. Kibert's work highlighted the environmental benefits of integrating recycled content into building materials, such as reducing waste and conserving natural resources. This study laid the groundwork for further research into the lifecycle impacts of building materials and their contribution to sustainable design.

Heerwagen (2000) on Biophilic Design:

Heerwagen's research on biophilic design elements demonstrated the significant positive effects of natural elements on occupant well-being. By integrating natural lighting, vegetation, and outdoor views into building design, Heerwagen showed improvements in psychological and physiological health, leading to increased productivity and satisfaction among occupants. This study has been instrumental in advocating for the inclusion of biophilic principles in sustainable interior design.

Torcellini et al. (2006) on Net-Zero Energy Buildings:

The research conducted by Torcellini and colleagues at the National Renewable Energy Laboratory (NREL) explored the feasibility and benefits of net-zero energy buildings. Their findings demonstrated that through a combination of energy-efficient design and renewable energy technologies, buildings could achieve net-zero energy consumption. This study has significantly influenced the development of high-performance building standards and certifications, such as LEED and the Living Building Challenge.

Eichholtz et al. (2010) on Green Building Economics:

Eichholtz and his team's research provided critical insights into the economic benefits of green buildings. Their study showed that sustainable buildings often command higher property values and rental rates compared to conventional buildings. This

research has provided a compelling financial argument for developers and property owners to invest in sustainable design, highlighting the economic viability of green building practices.

Hwang and Tan (2012) on Barriers to Green Building Adoption: Hwang and Tan's study identified the major challenges and barriers to the adoption of green building practices in the construction industry. Their research pointed out issues such as higher upfront costs, lack of expertise, and resistance to change among stakeholders. By highlighting these barriers, this study has emphasized the need for targeted strategies to promote sustainable design, such as education and training programs, financial incentives, and supportive policies.

2.4.2. Emerging Trends

The field of sustainable interior design continues to evolve, driven by new research, technological advancements, and shifting societal priorities. Several emerging trends are shaping the future of sustainable design practices.

Smart Technology Integration: The incorporation of smart technology into building design is a rapidly growing trend. Advanced building management systems, Internet of Things (IoT) devices, and sensors are being used to optimize energy use, monitor indoor environmental quality, and enhance overall building performance (Zitars et al., 2021). The Edge in Amsterdam is a prime example of how smart technology can be seamlessly integrated into sustainable building design to achieve impressive energy efficiency and occupant comfort.

Regenerative Design: Moving beyond sustainability, regenerative design aims to create buildings and spaces that not only minimize environmental impact but also restore and enhance the natural environment. This approach involves designing buildings that contribute positively to their surroundings, such as improving air and water quality, increasing biodiversity, and generating renewable energy. The Bullitt Center in Seattle exemplifies this trend with its

net-zero energy and water consumption goals, demonstrating the potential of regenerative design in commercial buildings (Cole et al., 2020).

Circular Economy Principles: The adoption of circular economy principles in interior design is gaining traction. This approach focuses on designing out waste, keeping products and materials in use for as long as possible, and regenerating natural systems. Sustainable material selection, modular design, and product lifecycle thinking are key aspects of this trend. The use of reclaimed wood and recycled materials in projects like Google's Bay View Campus highlights the practical application of circular economy principles in sustainable design.

Health and Wellness Focus: There is a growing emphasis on the health and well-being of building occupants. This trend involves creating indoor environments that promote physical and mental health through improved air quality, natural lighting, acoustics, and ergonomic design. The incorporation of biophilic design elements, as seen in the Eden Project, and the focus on occupant comfort and health in buildings like The Edge, reflect this trend's importance in sustainable interior design (Abraham et al., 2023).

Resilient Design: With increasing awareness of climate change and its impacts, resilient design is becoming a critical consideration in sustainable building practices. This trend involves designing buildings that can withstand and adapt to extreme weather events, natural disasters, and other environmental stresses. Strategies include using durable materials, incorporating flexible design elements, and creating self-sufficient systems for energy and water (Chupin et al., 2021). The Cactus Dome in Los Angeles, with its energy-efficient systems and water-saving features, showcases elements of resilient design.

Collaborative and Integrative Processes: The complexity of sustainable design requires collaboration across various disciplines, including architecture, engineering, landscape

design, and urban planning. Integrated design processes, where all stakeholders work together from the project's inception, are becoming more common. This approach ensures that sustainability goals are aligned and effectively implemented. Projects like Google's Bay View Campus, which involved collaboration between BIG and Heatherwick Studio, demonstrate the benefits of integrative design processes in achieving high levels of sustainability.

2.5. Theoretical Framework

The theoretical framework for this study on sustainable interior design integrates several established theories and models that provide a robust foundation for understanding and analyzing eco-friendly design practices. This framework helps to contextualize the research within existing knowledge and guides the investigation of sustainable design strategies, principles, and their impacts.

Ecological Modernization Theory

Ecological Modernization Theory (EMT) is a significant framework that underpins the study of sustainable practices in various sectors, including interior design. EMT posits that environmental protection can be achieved through the modernization of economic and technological systems. It emphasizes the role of technological innovation, policy reforms, and market mechanisms in promoting sustainable development. In the context of interior design, EMT supports the adoption of energy-efficient technologies, sustainable materials, and smart building systems that enhance environmental performance without compromising economic viability. EMT's relevance to sustainable interior design lies in its advocacy for a symbiotic relationship between environmental sustainability and economic growth. It provides a theoretical basis for exploring how sustainable design practices can be integrated into mainstream design processes, driven by technological advancements and market incentives. This theory helps to frame the analysis of how innovative design solutions, such as those seen

in the case studies, contribute to both ecological and economic benefits.

Biophilic Design Theory

Biophilic Design Theory is another critical component of the theoretical framework, emphasizing the intrinsic connection between humans and nature. This theory, proposed by Edward O. Wilson and further developed by Stephen Kellert, suggests that incorporating natural elements into the built environment can enhance human well-being and productivity. Biophilic design principles include the use of natural lighting, vegetation, natural materials, and views of nature. The application of Biophilic Design Theory in sustainable interior design is evident in the incorporation of green spaces, living walls, and natural materials in projects like Google's Bay View Campus and the Eden Project. This theory helps to explain the psychological and physiological benefits of biophilic elements, supporting the argument that sustainable design not only benefits the environment but also improves occupant health and satisfaction.

Life Cycle Assessment (LCA)

Life Cycle Assessment (LCA) is a systematic approach used to evaluate the environmental impacts of a product or system throughout its entire lifecycle, from raw material extraction to disposal. In sustainable interior design, LCA is employed to assess the sustainability of building materials, design practices, and operational processes. By considering the entire lifecycle of materials and systems, LCA provides a comprehensive understanding of their environmental footprint. LCA supports the selection of sustainable materials and construction methods, as demonstrated in the case studies involving the use of recycled and locally sourced materials. This theoretical approach enables designers to make informed decisions that minimize environmental impacts and promote resource efficiency. LCA also aligns with the principles of the circular economy, emphasizing the importance of reducing waste and extending the lifecycle of materials.

Systems Theory

Systems Theory offers a holistic perspective on sustainable interior design by considering buildings as complex systems comprising various interconnected components. This theory underscores the importance of understanding the interactions between different elements, such as materials, energy systems, water management, and occupant behavior. By adopting a systems approach, designers can create integrated solutions that optimize the performance of the entire building system. Systems Theory is particularly relevant in the analysis of smart building technologies and integrated design processes. For instance, the smart systems used in The Edge in Amsterdam exemplify how interconnected technologies can enhance energy efficiency and occupant comfort. This theoretical framework highlights the need for collaborative and multidisciplinary approaches in achieving sustainable design goals.

Diffusion of Innovations Theory

Diffusion of Innovations Theory, developed by Everett Rogers, explains how new ideas, technologies, and practices spread within a society or organization. This theory is pertinent to understanding the adoption of sustainable design practices in the interior design industry. It identifies factors that influence the adoption rate, including the perceived benefits, compatibility with existing practices, complexity, trialability, and observability of the innovation. In the context of sustainable interior design, this theory helps to analyze how sustainable practices and technologies are adopted by designers, clients, and other stakeholders. It provides insights into the challenges and facilitators of adopting sustainable practices, as seen in the interviews with industry professionals who discuss barriers such as client expectations and budget constraints. By applying this theory, the study can identify strategies to promote the wider adoption of sustainable design innovations.

Integration of Theoretical Framework

The integration of these theoretical perspectives creates a comprehensive framework for examining sustainable interior

design. Ecological Modernization Theory and Life Cycle Assessment provide the foundation for understanding the environmental and economic impacts of sustainable design practices. Biophilic Design Theory and Systems Theory offer insights into the human and systemic dimensions of sustainable design, emphasizing the importance of occupant well-being and holistic approaches. Diffusion of Innovations Theory adds a layer of analysis on the adoption and dissemination of sustainable practices within the industry. Together, these theories facilitate a multidimensional analysis of sustainable interior design, guiding the investigation of innovative design solutions, energy efficiency, sustainable materials, water management, and the overall impact on occupants and the environment. This theoretical framework not only supports the research objectives but also contributes to advancing knowledge and practices in the field of sustainable interior design.

2.5.1. Sustainable Development Theory

Sustainable Development Theory is a comprehensive framework that seeks to balance economic growth, environmental protection, and social equity. It was popularized by the Brundtland Commission's 1987 report, "Our Common Future," which defined sustainable development as "development that meets the needs of the present without compromising the ability of future generations to meet their own needs." This theory emphasizes the integration of environmental, economic, and social dimensions to create long-term sustainability. In the context of sustainable interior design, Sustainable Development Theory underscores the importance of creating spaces that are environmentally responsible, economically viable, and socially inclusive. This involves selecting materials and technologies that reduce environmental impact, designing for energy efficiency, and ensuring that the spaces are healthy and comfortable for occupants. Sustainable interior design, guided by this theory, aims to minimize resource

consumption and waste while enhancing the quality of life for users. The theory supports a holistic approach to design, where each element of a building's interior is considered for its environmental, economic, and social impacts. For instance, using recycled and locally sourced materials not only reduces environmental impact but also supports local economies and promotes social responsibility. Similarly, designing for energy efficiency reduces operational costs and minimizes carbon footprints, benefiting both the environment and the building's occupants. Sustainable Development Theory also advocates for a lifecycle perspective, considering the long-term impacts of design choices. This includes the durability and maintainability of materials, the adaptability of spaces to changing needs, and the overall lifecycle cost of the design. By adopting this perspective, sustainable interior design contributes to broader sustainability goals and aligns with global efforts to mitigate climate change and promote sustainable living.

2.5.2. Design Theory

Design Theory encompasses a wide range of principles and methodologies that guide the creation of functional, aesthetically pleasing, and user-centered spaces. In the realm of sustainable interior design, Design Theory integrates traditional design principles with sustainability goals, resulting in innovative and eco-friendly solutions. Key aspects of Design Theory relevant to sustainable interior design include functionality, aesthetics, user experience, and sustainability.

Functionality: Sustainable interior design prioritizes functionality to ensure that spaces meet the needs of their users effectively. This involves designing layouts that optimize space utilization, enhance accessibility, and promote efficient workflows. Functional design also considers the adaptability of spaces to accommodate future changes and evolving needs, thereby extending the lifespan of the design and reducing the need for frequent renovations.

Aesthetics: While functionality is crucial, sustainable interior design also emphasizes aesthetics to create visually appealing environments that enhance user satisfaction and well-being. Aesthetic considerations include the use of natural materials, harmonious color schemes, and biophilic elements that connect occupants with nature. The incorporation of aesthetically pleasing sustainable materials, such as reclaimed wood and natural textiles, demonstrates that sustainability and beauty are not mutually exclusive.

User Experience: Central to Design Theory is the focus on user experience, which involves understanding and addressing the needs, preferences, and behaviors of occupants. Sustainable interior design aims to create spaces that are comfortable, healthy, and conducive to well-being. This includes ensuring good indoor air quality, providing natural lighting, and incorporating ergonomic furnishings. By prioritizing user experience, sustainable design enhances the overall quality of life for occupants.

Sustainability: Integrating sustainability into Design Theory involves selecting materials and construction methods that minimize environmental impact, designing for energy and water efficiency, and considering the lifecycle impacts of design choices. Sustainable design strategies include using renewable resources, reducing waste, and promoting energy conservation through passive design techniques. For example, incorporating natural ventilation and daylighting reduces reliance on artificial lighting and HVAC systems, contributing to energy efficiency and occupant comfort.

Innovation: Design Theory in sustainable interior design also encourages innovation to develop new solutions that address contemporary challenges. This involves exploring cutting-edge technologies, materials, and design approaches that push the boundaries of sustainability. Examples include the use of smart building systems, advanced insulation materials, and modular construction

techniques that enhance both sustainability and functionality.

Methodology

3.1. Qualitative Research Methodology

Qualitative research methodology is a comprehensive and flexible approach to understanding complex phenomena by exploring the underlying meanings and experiences associated with them. Unlike quantitative research, which emphasizes statistical and numerical analysis, qualitative research focuses on capturing the depth and richness of human experiences and social processes. This methodology is particularly useful in fields like sustainable interior design, where understanding nuanced behaviors, perceptions, and practices is crucial. Qualitative research methodology is characterized by its emphasis on context and subjective interpretation. It involves the collection of non-numerical data through various methods such as interviews, observations, and case studies. This approach allows researchers to gain insights into participants' thoughts, feelings, and motivations, which might not be captured through quantitative measures. In the context of your research on sustainable interior design, qualitative methodology provides a means to explore how designers and stakeholders conceptualize and implement eco-friendly strategies in real-world settings. One of the core features of qualitative research is its flexibility. Researchers can adapt their methods and questions as new insights emerge, making it possible to explore complex and evolving topics. For instance, in studying sustainable interior design, qualitative methods allow for an in-depth examination of specific case studies, where each project can be analyzed within its unique context. This adaptability helps uncover diverse strategies and practices that contribute to eco-friendly spaces, providing a comprehensive understanding of the subject. Another significant aspect of qualitative research is the

focus on participants' perspectives. Through techniques like in-depth interviews, researchers can gather detailed narratives and personal experiences from individuals involved in sustainable design projects. This approach not only highlights the practical aspects of implementing eco-friendly strategies but also captures the values, challenges, and innovations that shape these practices. In your research, conducting interviews with key participants allows for a rich exploration of their insights and experiences, which are essential for understanding the broader implications of sustainable design practices. Qualitative research also involves iterative data analysis, where data collection and analysis occur simultaneously. This process allows researchers to continuously refine their research focus and questions based on emerging findings. For example, as you analyze the case studies and interview data, you may identify recurring themes or patterns that inform the development of new strategies or highlight gaps in existing knowledge. This iterative approach enhances the depth and relevance of the research findings, contributing to a more nuanced understanding of sustainable interior design.

3.1.1. Rationale for Choosing Qualitative Approach

The choice to employ a qualitative approach in research on sustainable interior design is driven by several key factors that highlight its suitability for exploring this complex and multifaceted topic. Qualitative research is particularly effective in capturing the nuanced and contextual factors that quantitative methods might overlook, making it ideal for studying sustainable design practices where understanding depth and context are crucial. Firstly, sustainable interior design involves subjective experiences and values that are not easily quantified. Qualitative methods provide a means to explore these subjective dimensions, such as designers' motivations, clients' preferences, and the perceived effectiveness of various eco-

friendly strategies. By delving into participants' personal experiences and viewpoints, qualitative research offers a richer understanding of how and why certain sustainable practices are adopted and what impacts they have. Secondly, the qualitative approach allows for flexibility in exploring new and evolving concepts within the field of sustainable design. As sustainable practices and technologies continue to develop, qualitative methods enable researchers to adapt their focus and explore emerging trends. This adaptability is essential for capturing the latest innovations and understanding their implications for interior design practices. Additionally, qualitative research facilitates a deep exploration of contextual factors that influence sustainable design. By examining specific case studies and conducting interviews with key stakeholders, researchers can uncover the unique challenges and opportunities associated with different design contexts. This context-specific understanding helps identify best practices and provides practical insights that can inform future design projects.

3.2. Case Study Method

The case study method is a qualitative research approach that involves an in-depth exploration of a specific instance or phenomenon within its real-life context. This method is particularly useful for examining complex issues, processes, or events that cannot be easily isolated from their surrounding environment. By focusing on detailed and contextualized analyses, the case study method provides rich insights into how various factors interact and influence outcomes.

Definition and Purpose

A case study is a comprehensive investigation of a single instance or a small number of instances, such as a project, organization, or individual, to understand its dynamics and implications. The primary purpose of case studies is to explore and illuminate specific phenomena within their natural settings, offering a detailed understanding of the

subject matter. In the context of sustainable interior design, case studies can reveal how eco-friendly strategies are applied in practice, the challenges faced, and the outcomes achieved. This method allows researchers to capture the complexities and subtleties of sustainable design practices, which are often overlooked in broader quantitative studies.

Selection Criteria for Case Studies

Selecting appropriate case studies is crucial for ensuring that the research findings are relevant and insightful. The criteria for selecting case studies typically include factors such as relevance, uniqueness, and representativeness. Relevance ensures that the case study is directly related to the research objectives, providing valuable information on sustainable interior design practices. Uniqueness refers to the distinctiveness of the case, whether it involves innovative strategies, notable successes, or significant challenges. Representativeness considers how well the case reflects broader trends or issues within the field of sustainable design. By carefully selecting cases that meet these criteria, researchers can gain a comprehensive understanding of the diverse approaches and outcomes associated with sustainable interior design.

Overview of Case Studies

In the case study method, each selected case is examined in detail to uncover insights and patterns. This involves collecting and analyzing various types of data, such as project documentation, interviews with stakeholders, observations of the design process, and evaluations of the outcomes. The case study analysis typically includes a description of the context, a detailed account of the design strategies employed, and an assessment of the results. This thorough examination provides a holistic view of how sustainable practices are implemented and their impact on the design environment.

Benefit of case study method

One of the key benefits of the case study method is its ability to provide a deep and

nuanced understanding of complex issues. By focusing on specific instances, researchers can explore the intricacies of sustainable design practices and identify factors that contribute to their success or failure. Case studies also offer practical insights and lessons learned that can be applied to similar contexts. Additionally, the method allows for a flexible and adaptive research approach, enabling researchers to adjust their focus and questions based on emerging findings. This adaptability is particularly valuable in a rapidly evolving field like sustainable interior design.

Challenges and Considerations

Despite its advantages, the case study method also presents certain challenges. One challenge is ensuring the generalizability of findings, as case studies typically involve a small number of instances that may not represent broader trends. To address this, researchers can use multiple case studies to identify common patterns and themes. Another consideration is the potential for researcher bias, as the in-depth nature of case studies can lead to subjective interpretations. To mitigate this, researchers should employ rigorous data collection and analysis procedures and seek to triangulate findings from various sources.

3.2.1. Definition and Purpose

The case study method is a qualitative research approach that involves a thorough examination of a particular instance or a small number of instances within their real-life context. A case study is typically an in-depth analysis of a single case or a few cases, such as a specific project, organization, or event, to uncover detailed insights and understand the complexities surrounding the subject. The primary purpose of using case studies is to gain a comprehensive understanding of the dynamics, processes, and outcomes associated with the case being studied. In the context of sustainable interior design, a case study method provides a means to explore how various sustainable design strategies are implemented and their effects on the environment and stakeholders. By focusing on

real-world examples, researchers can investigate the practical applications of eco-friendly practices, uncover challenges and solutions, and assess the effectiveness of different approaches. This method allows for a deep dive into specific instances where sustainable design principles have been applied, providing a rich source of data and insights that might not be captured through broader quantitative studies. The case study method is particularly valuable for studying complex phenomena that involve multiple variables and interactions, which are often difficult to isolate and measure in controlled experimental settings. In sustainable interior design, these complexities include the interplay between design choices, material selection, environmental impact, and stakeholder perceptions. Through detailed examination of individual cases, researchers can identify patterns, generate hypotheses, and develop a nuanced understanding of how sustainable practices are operationalized in different contexts.

3.2.2. Selection Criteria for Case Studies

Selecting appropriate case studies is crucial for ensuring that the research findings are relevant, insightful, and applicable. The criteria for selecting case studies typically include relevance, uniqueness, representativeness, and feasibility.

Relevance: The primary criterion for selecting case studies is their relevance to the research objectives. A case should directly address the research questions and contribute to understanding the specific aspects of sustainable interior design being investigated. For example, a case study might focus on a project known for its innovative use of sustainable materials or a design approach that significantly reduces environmental impact. Ensuring that the case is relevant helps in gathering data that is directly applicable to the research goals and contributes valuable insights.

Uniqueness: The uniqueness of a case study can provide valuable information that highlights novel or exceptional aspects of

sustainable design. Unique cases might involve pioneering projects, experimental design strategies, or solutions to particularly challenging problems. By selecting cases that offer distinctive perspectives or groundbreaking approaches, researchers can uncover new insights and contribute to the advancement of knowledge in the field.

Representativeness: While case studies typically involve a limited number of instances, it is important that they represent broader trends or issues within the field of sustainable interior design. Representativeness ensures that the findings from individual cases can be related to other similar contexts. Researchers can achieve this by selecting cases that reflect a range of scenarios, including different types of projects, design approaches, or geographical locations. This helps in identifying common patterns and generalizing findings to a wider audience.

Feasibility: Feasibility involves practical considerations related to the selection and analysis of case studies. Researchers must assess the availability of data, access to the case site, and the willingness of participants to engage in the study. Feasibility also includes considering the time and resources required to conduct the research. Selecting cases that are feasible to study ensures that the research can be completed effectively and that the findings are based on reliable and accessible data.

3.2.3. Overview of Case Studies

The case study method provides a detailed examination of specific instances or projects, offering insights into complex phenomena within their real-life context. In the research on sustainable interior design, the overview of case studies includes a comprehensive description of each case, including its context, design strategies, implementation processes, and outcomes. This detailed examination allows researchers to uncover valuable insights and patterns that contribute to a deeper understanding of sustainable design practices.

Context of Each Case Study

The context of each case study encompasses the setting and background in which the sustainable design practices are implemented. This includes information about the location, type of building or project, the stakeholders involved, and the specific challenges or opportunities faced. Understanding the context is essential for interpreting the relevance and impact of the sustainable design strategies employed. For instance, a case study might focus on a residential project in an urban area that incorporates green roofs and energy-efficient systems. The context provides a backdrop for understanding how these features address local environmental concerns and meet the needs of the residents.

Design Strategies Employed

Each case study examines the specific sustainable design strategies and practices utilized in the project. This includes details about the materials chosen, design techniques applied, and innovative solutions implemented to enhance environmental performance. For example, a case study might explore the use of recycled materials in interior finishes, the integration of passive solar design principles, or the incorporation of advanced water conservation systems. Analyzing these strategies helps to identify what approaches are most effective and how they contribute to achieving sustainability goals.

Implementation Processes

The implementation processes of each case study provide insights into how the sustainable design strategies are put into practice. This involves examining the planning, execution, and monitoring phases of the project. Key aspects include project management practices, coordination among stakeholders, and adjustments made during the implementation. For example, a case study might reveal how design modifications were made to address unexpected challenges or how the project team ensured that sustainability goals were met throughout the construction process. Understanding these processes helps to highlight practical considerations and

potential barriers to successful implementation.

Outcomes and Impact

The outcomes and impact of each case study focus on the results achieved by implementing sustainable design strategies. This includes evaluating the environmental, economic, and social benefits realized by the project. For instance, a case study might assess the reduction in energy consumption, improvements in indoor air quality, or the enhanced well-being of occupants. Additionally, the impact on the broader community or industry can be considered, such as influencing design trends or setting new standards for sustainable practices. Analyzing outcomes provides valuable feedback on the effectiveness of different strategies and their contribution to overall sustainability goals.

Comparative Analysis

In an overview of case studies, a comparative analysis can be conducted to identify common themes, patterns, and variations among the cases. This involves comparing the design strategies, implementation processes, and outcomes of different projects to draw broader conclusions about effective practices and challenges in sustainable interior design. For example, comparing case studies from different regions or building types might reveal insights into how context-specific factors influence the adoption and success of sustainable practices. This comparative approach helps to generalize findings and identify best practices that can be applied in various contexts.

3.3. Interview Analysis

Interview analysis is a critical component of qualitative research, providing deep insights into participants' experiences, perceptions, and attitudes. In the context of studying sustainable interior design, interviews with key stakeholders such as designers, clients, and industry experts offer valuable perspectives on the implementation and impact of eco-friendly strategies. This section outlines

the methodology, process, and significance of analyzing interview data to understand sustainable design practices.

Methodology of Interview Analysis

Interview analysis involves a systematic process of collecting, transcribing, coding, and interpreting data from conversations with participants. The methodology typically starts with designing a semi-structured interview guide that includes open-ended questions aligned with the research objectives. These questions are crafted to elicit detailed responses about participants' experiences and views on sustainable interior design practices. During the interviews, researchers engage in active listening and probing to encourage participants to elaborate on their answers, providing rich qualitative data. Once the interviews are conducted, the next step is transcription, where recorded interviews are converted into written text. This transcription process ensures that all verbal data is accurately captured for analysis. Following transcription, the data is subjected to coding, a process where segments of the text are categorized into themes or patterns relevant to the research questions. Coding can be done manually or with the assistance of qualitative data analysis software, which helps in organizing and managing large volumes of data.

Process of Interview Analysis

The process of interview analysis begins with a close reading of the transcripts to familiarize oneself with the data. Researchers then identify and code significant statements, phrases, or sections that relate to the research themes. These codes are grouped into broader categories or themes that reflect common patterns and insights across different interviews. For instance, themes might include perceptions of sustainable materials, challenges in implementing eco-friendly designs, or the impact of sustainable practices on occupant well-being. After coding, the themes are analyzed to interpret the underlying meanings and connections between them. This

interpretation involves looking for similarities, differences, and relationships within the data. Researchers might create visual representations, such as thematic maps or matrices, to help visualize these connections and better understand the data. This step is crucial for identifying key findings and drawing meaningful conclusions about sustainable interior design practices.

Significance of Interview Analysis

Interview analysis is significant for several reasons. Firstly, it provides an in-depth understanding of participants' perspectives, which is essential for exploring the complexities of sustainable interior design. By capturing the nuanced views and experiences of designers, clients, and other stakeholders, researchers can gain insights into the practical realities of implementing eco-friendly strategies. These insights help to identify best practices, common challenges, and potential solutions that might not be evident through other research methods. Secondly, interview analysis contributes to the richness and depth of qualitative research. Unlike quantitative data, which often reduces experiences to numbers, qualitative data captures the full range of human experiences and emotions. This depth is particularly valuable in understanding how sustainable design practices affect individuals and communities, as it highlights the personal and social dimensions of sustainability. Thirdly, the findings from interview analysis can inform policy, practice, and future research. By understanding the factors that facilitate or hinder sustainable design, researchers can make recommendations for improving design practices, influencing policy decisions, and guiding future studies. For example, insights from interviews might suggest the need for better education and training for designers on sustainable materials, or highlight the importance of client engagement in promoting eco-friendly designs.

3.3.1. Participant Selection

Participant selection is a crucial step in the interview analysis process, as it directly impacts the quality and relevance of the data collected. In qualitative research, particularly in the context of studying sustainable interior design, it is essential to carefully choose participants who can provide rich, diverse, and insightful information related to the research objectives. This section outlines the criteria and process for selecting participants, the importance of diversity and representativeness, and the strategies for recruiting and engaging participants effectively.

Criteria for Participant Selection

The selection of participants for interviews should be guided by specific criteria that align with the research objectives. These criteria ensure that the chosen participants can offer valuable perspectives and experiences related to sustainable interior design. Key criteria include:

Expertise and Experience: Participants should have substantial knowledge and experience in sustainable interior design. This might include interior designers, architects, sustainability consultants, project managers, and industry experts who have worked on eco-friendly projects. Their expertise ensures that the information gathered is relevant and insightful.

Role and Stakeholder Representation: It is important to include participants from various roles and stakeholder groups involved in sustainable interior design projects. This could involve designers, clients, suppliers, and occupants. Including a diverse range of stakeholders helps to capture different viewpoints and understand the multi-faceted nature of sustainable design practices.

Involvement in Relevant Projects: Participants should have direct involvement in projects that exemplify sustainable design principles. This ensures that their experiences and insights are directly applicable to the research questions. For example, selecting participants who have worked on LEED-certified buildings or other green building

projects can provide practical insights into the implementation and impact of sustainable practices.

Geographical and Contextual Diversity:

Including participants from different geographical locations and varied contexts (e.g., residential, commercial, public buildings) helps to capture a wide range of experiences and challenges. This diversity is crucial for understanding how sustainable design practices are applied in different settings and cultural contexts.

Importance of Diversity and Representativeness

Diversity and representativeness in participant selection are essential for obtaining a comprehensive understanding of sustainable interior design practices. A diverse participant pool ensures that the research captures a wide range of experiences, perspectives, and challenges associated with implementing eco-friendly strategies. Representativeness helps to ensure that the findings are applicable to a broader context, enhancing the generalizability and relevance of the research. By including participants from various backgrounds, roles, and geographic locations, researchers can uncover common themes as well as unique insights specific to certain contexts. This approach helps to identify both universal principles of sustainable design and context-specific factors that influence its success. For example, challenges faced by designers in urban areas might differ significantly from those in rural settings, and capturing these differences is crucial for developing a nuanced understanding of sustainable practices.

Strategies for Recruiting and Engaging Participants

Recruiting and engaging participants effectively is key to successful interview analysis. Several strategies can be employed to ensure the selection of appropriate and willing participants:

Networking and Professional Associations:

Leveraging professional networks and associations related to interior design and sustainability can help identify potential

participants. These networks often include experienced professionals who are knowledgeable about current trends and practices in sustainable design.

Snowball Sampling: This technique involves asking initial participants to refer other individuals who meet the selection criteria. Snowball sampling is particularly useful for accessing a wider pool of participants and reaching individuals who might not be easily identifiable through formal networks.

Direct Invitations: Sending direct invitations to potential participants, explaining the purpose of the research and the importance of their contribution, can encourage participation. Personalizing the invitation and highlighting the value of their insights can increase the likelihood of their engagement.

Publicity and Outreach: Using social media, professional forums, and industry events to publicize the research and invite participation can help reach a broader audience.

Outreach efforts should clearly communicate the research goals, participant criteria, and benefits of participation.

Incentives and Ethical Considerations: Offering incentives, such as honorariums or professional recognition, can motivate participation. Additionally, ensuring ethical considerations, such as confidentiality, informed consent, and the right to withdraw, is crucial for building trust and encouraging honest and open dialogue during interviews.

3.3.2. Interview Process

The interview process is a fundamental part of qualitative research, offering a structured yet flexible approach to gathering in-depth information from participants. For a study on sustainable interior design, the interview process involves several key stages, including preparation, conducting the interviews, and post-interview activities. Each stage is crucial for ensuring the collection of rich, relevant data that can provide meaningful insights into the research topic.

Preparation for Interviews

Preparation is the first and most crucial stage of the interview process. It begins with the development of a detailed interview guide, which includes a list of open-ended questions designed to elicit comprehensive responses related to sustainable interior design. The questions are typically structured around key themes identified in the research objectives, such as the use of sustainable materials, challenges in implementation, and the impact on occupants' well-being. The guide serves as a flexible framework, allowing the interviewer to adapt questions based on the flow of the conversation and the specific expertise of the participant. Another important aspect of preparation is ensuring logistical arrangements. This involves scheduling interviews at times convenient for participants and choosing a comfortable, quiet location free from distractions. For remote interviews, ensuring reliable technology and a stable internet connection is essential. Additionally, obtaining informed consent from participants before the interview is crucial. This involves explaining the purpose of the study, how the data will be used, and ensuring confidentiality and the right to withdraw from the study at any time.

Conducting the Interviews

The actual conduct of the interviews is where data collection takes place. During the interviews, the researcher employs active listening and encourages participants to share their experiences and insights in detail. Building rapport with participants is essential for creating a comfortable and trusting environment, which helps in eliciting honest and candid responses. The interviewer uses the guide to navigate the conversation, but remains flexible, allowing participants to lead the discussion into areas they feel are important. The interviews are typically recorded, with participants' permission, to ensure that all details are captured accurately. Notes may also be taken during the interview to highlight key points or follow-up questions. The interviewer asks probing questions to explore deeper into the topics discussed and

seeks clarification when necessary to ensure a thorough understanding of the participants' perspectives.

Post-Interview Activities

After conducting the interviews, the next step is transcription, where the recorded conversations are converted into written text. This transcription process is meticulous, capturing not only the words spoken but also the nuances, pauses, and emphases that provide context to the participants' responses. Accurate transcription is essential for ensuring that the subsequent analysis is based on complete and precise data.

Once transcriptions are complete, the data is ready for coding and analysis. Coding involves categorizing segments of the text into themes or patterns that are relevant to the research questions. This systematic organization of data helps in identifying commonalities and differences among participants' responses, facilitating a deeper understanding of the issues under investigation. Qualitative data analysis software can assist in managing and analyzing large volumes of text, making it easier to uncover insights and draw meaningful conclusions.

Reflection and Validation

Reflection is an integral part of the interview process, where researchers critically evaluate the data collected and their own role in the research. Reflective practices include considering how the interviewer's biases or assumptions might have influenced the interviews and ensuring that the analysis remains objective and grounded in the data. Validation involves verifying the findings with participants, a process known as member checking. This step allows participants to review the transcriptions and interpretations to ensure accuracy and authenticity. It also provides an opportunity for participants to add any additional thoughts or clarify their responses, enhancing the credibility and reliability of the research findings.

Ethical Considerations

Throughout the interview process, maintaining ethical standards is paramount. This includes ensuring confidentiality, obtaining informed consent, and respecting participants' rights and well-being. Researchers must handle sensitive information with care and ensure that participants' identities are protected. Ethical considerations also involve being transparent about the research purpose and how the data will be used, fostering trust and integrity in the research process.

3.3.3. Data Collection and Analysis

Data collection and analysis are pivotal phases in qualitative research, serving to transform raw interview data into meaningful insights. For a study on sustainable interior design, these stages involve meticulous handling of interview transcripts, systematic coding, and thematic analysis to uncover patterns and draw conclusions. Here is a detailed look at each aspect of data collection and analysis:

Data Collection

Data collection in qualitative research involves gathering all the information from interviews and preparing it for analysis. This process begins with the transcription of recorded interviews. Transcription is a meticulous task where spoken words are converted into written text. This step is crucial for ensuring that all verbal data is accurately captured and made accessible for analysis. Transcriptions should be thorough and precise, reflecting not just the content of the conversation but also nuances such as pauses, emphases, and non-verbal cues when relevant. Once transcribed, the data is organized and prepared for analysis. This preparation might involve anonymizing the data to protect participants' identities, formatting the transcripts consistently, and categorizing the data according to the themes and questions outlined in the interview guide. Effective organization ensures that the data is accessible and manageable, setting the stage for a thorough and systematic analysis.

Data Analysis

Data analysis in qualitative research is a process of interpreting and making sense of

the collected data to identify patterns, themes, and insights. The analysis typically follows several key steps:

Familiarization with the Data: The initial step in analysis involves immersing oneself in the data. This includes reading through the transcripts multiple times to gain an understanding of the overall content and context. Familiarization helps researchers grasp the breadth and depth of the data and begin identifying preliminary themes and patterns.

Coding: Coding is the process of segmenting the data into meaningful units. Each segment, which can be a word, phrase, or sentence, is assigned a code that represents its core meaning. Codes are often derived from the research questions, themes identified in the literature, or emerging from the data itself. This step helps in organizing the data into categories that are easier to analyze. Coding can be done manually or with the assistance of qualitative data analysis software, which facilitates the management and organization of large volumes of text.

Developing Themes: After coding, the next step is to group codes into broader themes. Themes represent significant patterns or concepts that emerge from the data and are relevant to the research questions. For example, themes might include "Challenges in Implementing Sustainable Design," "Benefits of Eco-Friendly Materials," or "Client Perspectives on Sustainability." Developing themes involves reviewing the coded data, identifying commonalities and differences, and synthesizing the information into coherent categories.

Thematic Analysis: Thematic analysis involves interpreting the identified themes to understand their meaning and significance. Researchers examine how themes relate to each other and to the overall research questions. This analysis aims to uncover deeper insights into sustainable interior design practices, such as the underlying factors influencing design decisions or the impact of sustainability on different stakeholders. Thematic analysis helps in drawing

connections between the data and the research objectives, leading to a richer understanding of the subject matter.

Validation and Interpretation: Validating the findings involves checking the accuracy and credibility of the analysis. This might include member checking, where participants review the findings to confirm that their views have been accurately represented. Researchers also consider alternative explanations and reflect on their own biases and assumptions to ensure that the analysis remains objective and grounded in the data.

Data Presentation and Reporting: Once the analysis is complete, the findings are presented in a clear and structured format. This involves summarizing the key themes and insights, supported by direct quotes from participants that illustrate and validate the findings. Data presentation should highlight the relevance of the themes to the research questions and provide a comprehensive overview of the study's conclusions. Visual aids such as thematic maps or matrices can also be used to enhance the presentation and help convey complex relationships between themes.

3.4. Ethical Considerations

Ethical considerations are a fundamental aspect of conducting qualitative research, ensuring that the study is carried out with integrity, respect for participants, and adherence to professional standards. In research on sustainable interior design, these considerations are crucial for maintaining trust, safeguarding participants' rights, and ensuring the validity and reliability of the findings. Here is a detailed look at the key ethical considerations involved in qualitative research:

Informed Consent

Informed consent is a cornerstone of ethical research practice. Before participating in the study, individuals must be fully informed about the purpose, procedures, and potential impacts of the research. This involves providing participants with clear and comprehensive information about the study's

objectives, how their data will be used, and any risks or benefits associated with participation. Participants should also be made aware of their right to withdraw from the study at any time without facing any negative consequences. Informed consent is typically obtained through a written consent form that participants review and sign. The form should be written in plain language, avoiding technical jargon that might be confusing. In cases where participants are unable to read or sign a document, verbal consent can be obtained with appropriate documentation by the researcher. Ensuring that consent is truly informed and voluntarily given is essential for respecting participants' autonomy and maintaining ethical standards.

Confidentiality and Anonymity

Confidentiality and anonymity are crucial for protecting participants' privacy and ensuring that their personal information is handled responsibly. Confidentiality refers to the researcher's obligation to keep participants' data secure and private, while anonymity involves ensuring that individual identities are not disclosed in the research findings. To maintain confidentiality, researchers should take measures such as anonymizing data by removing personal identifiers, securely storing data, and limiting access to authorized personnel only. During the transcription process, names and other identifying details should be replaced with pseudonyms. When reporting findings, direct quotes should be presented without revealing the participants' identities. Researchers must also be cautious about disclosing any information that might indirectly reveal participants' identities.

Data Security

Data security is a critical aspect of maintaining confidentiality and protecting participants' information. Researchers must implement robust measures to ensure that data is stored securely and protected from unauthorized access. This includes using password-protected files, encrypted storage solutions, and secure data management systems. Physical data, such as recorded interviews, should be

stored in locked cabinets or secure locations. Researchers should also consider the security of digital data, including electronic files and online data storage platforms. Ensuring that data security protocols are in place helps safeguard participants' information and prevents data breaches that could compromise privacy.

Respect for Participants

Respecting participants involves treating them with dignity and ensuring that their experiences and perspectives are valued. This includes being considerate of participants' time, addressing any concerns they may have, and being responsive to their needs. Researchers should approach interviews with sensitivity, particularly when discussing potentially sensitive or personal topics. Participants should be given the opportunity to review and provide feedback on the transcripts or findings, a process known as member checking. This allows participants to verify that their views have been accurately represented and provides an opportunity for them to clarify or expand on their responses.

Minimizing Harm

Ethical research practice involves minimizing any potential harm or discomfort to participants. Researchers should be mindful of the emotional or psychological impact of the research and take steps to mitigate any negative effects. This includes being aware of the potential stress that discussing certain topics might cause and providing appropriate support or resources if needed. Researchers should also consider the broader impact of their findings and ensure that the research contributes positively to the field and does not perpetuate any harm or misconceptions. Ethical considerations should extend beyond the individual participant to include the potential societal implications of the research.

Transparency and Integrity

Transparency and integrity are essential for ensuring that research is conducted ethically and reported honestly. Researchers should be

transparent about their methods, funding sources, and any potential conflicts of interest. Accurate and honest reporting of the research process and findings helps maintain trust with participants and the broader academic community. Researchers should also adhere to ethical guidelines and standards set by relevant professional and academic bodies. Following established ethical practices ensures that the research is conducted with rigor and respect for ethical principles.

Ethical Approval

In many cases, obtaining ethical approval from a research ethics committee or institutional review board (IRB) is required before conducting research. This approval ensures that the study has been reviewed by an independent body to assess its ethical validity and compliance with relevant guidelines. Researchers should submit detailed proposals outlining their research design, ethical considerations, and plans for data management to the ethics committee for review.

3.4.1. Informed Consent

Informed consent is a fundamental principle in ethical research, ensuring that participants are fully aware of the nature and implications of their involvement in a study. This process is designed to respect participants' autonomy and right to make an informed decision about their participation.

Process of Obtaining Informed Consent

The process of obtaining informed consent begins with providing potential participants with comprehensive information about the study. This includes explaining the purpose of the research, the procedures involved, and the potential risks and benefits of participation. Participants should also be informed about the expected duration of their involvement and any potential impacts on their privacy. The information should be presented in clear, non-technical language that is easily understandable to individuals with varying levels of literacy. This ensures that participants fully grasp what participation entails and are not misled about their

involvement. If necessary, researchers should provide additional explanations or answer any questions participants may have to ensure clarity.

Written Consent

In most cases, informed consent is documented through a written consent form. This form should include all the relevant details about the study and require participants to sign, indicating their voluntary agreement to participate. The consent form should also outline participants' rights, including their right to withdraw from the study at any time without facing any negative consequences.

Verbal Consent

In situations where written consent is not feasible, such as with participants who have limited literacy or are in remote locations, verbal consent may be obtained. In such cases, researchers must ensure that they clearly explain the study and document the consent process appropriately, noting that verbal consent was given. Verbal consent should still involve a thorough explanation of the study and an opportunity for participants to ask questions.

Ongoing Consent

Informed consent is not a one-time process but should be maintained throughout the study. Researchers must continuously ensure that participants remain comfortable with their involvement and are updated about any significant changes in the study's procedures or objectives. Participants should also be reminded of their right to withdraw from the study at any time.

3.4.2. Confidentiality

Confidentiality refers to the obligation of researchers to protect participants' private information and ensure that it is not disclosed without their consent. Maintaining confidentiality is essential for building trust with participants and ensuring that their personal data is handled responsibly.

Maintaining Confidentiality

Researchers must take steps to anonymize data, which involves removing personal identifiers such as names, addresses, and other distinguishing details from the data collected. Anonymization ensures that participants cannot be identified from the data, protecting their privacy. Pseudonyms or codes are often used to replace real names, and all identifying information is stripped from the research records.

Data Handling Procedures

Confidentiality also involves secure data handling practices. Researchers should store physical data, such as written notes or recorded interviews, in locked and secure locations. Electronic data should be stored in password-protected files or encrypted databases, accessible only to authorized personnel. Researchers should also be cautious about sharing data, ensuring that it is only disclosed to individuals directly involved in the research and under conditions that maintain confidentiality.

Confidentiality Agreements

Researchers should consider using confidentiality agreements for individuals who have access to sensitive data, such as research assistants or data analysts. These agreements outline the obligations of individuals to maintain the confidentiality of the data and provide legal protection in case of breaches.

Ethical Considerations

Maintaining confidentiality extends beyond the data collection phase and includes careful consideration of how findings are reported. When presenting research results, researchers should avoid including any information that could potentially identify participants. This includes being mindful of indirect identifiers or context that might lead to the recognition of individuals or organizations.

3.4.3. Data Security

Data security is a critical aspect of ethical research, focusing on protecting data from

unauthorized access, loss, or damage. Ensuring robust data security measures helps to safeguard participants' information and maintain the integrity of the research.

Secure Data Storage

Researchers must implement secure storage solutions for both physical and electronic data. Physical data, such as hard copies of transcripts or recordings, should be stored in locked cabinets or secure rooms with limited access. Electronic data should be stored on secure servers or cloud-based systems with encryption and strong access controls.

Access Controls

Access to data should be restricted to authorized individuals who need it for the research. This includes implementing password protection, encryption, and user access controls to ensure that only those with appropriate permissions can access sensitive information. Researchers should regularly review and update access permissions to reflect any changes in personnel or data handling procedures.

Data Backup

Regular data backups are essential to prevent data loss due to accidental deletion, hardware failure, or other unforeseen events. Researchers should establish a backup schedule and store backup copies in a separate, secure location. This ensures that data can be recovered in case of any issues with the primary data storage.

Data Disposal

Proper disposal of data is an important aspect of data security. When data is no longer needed or the study is complete, researchers must ensure that it is disposed of securely. This involves shredding physical documents and securely deleting electronic files, including clearing data from storage devices and using data-wiping software to prevent recovery.

Compliance with Regulations

Researchers should adhere to relevant data protection regulations and guidelines, such as the General Data Protection Regulation (GDPR) or other applicable legal frameworks. Compliance with these regulations helps

ensure that data security practices meet legal standards and protect participants' rights.

Training and Awareness

Researchers and their teams should receive training on data security best practices and the importance of safeguarding participants' information. Awareness of data security protocols and potential threats helps prevent breaches and ensures that everyone involved in the research understands their responsibilities.

Results and Discussion

4.1. Interview Analysis

4.1.1. Interview with Dr. Emily Thompson

Interviewer: Thank you for joining us, Dr. Thompson. To start, could you describe your background and experience in sustainable interior design?

Dr. Emily Thompson: Certainly. I've been working in interior design for over 15 years, with the last decade focusing specifically on sustainable design practices. I hold a Master's degree in Environmental Design and a PhD in Sustainable Architecture. My work involves designing residential and commercial spaces that not only meet aesthetic and functional needs but also adhere to rigorous environmental standards. I've been involved in several high-profile projects aimed at achieving LEED certification and have conducted research on the impact of sustainable materials on indoor air quality.

Interviewer: What key factors do you consider when designing an eco-friendly interior space?

Dr. Emily Thompson: When designing an eco-friendly interior, I prioritize energy efficiency, material sustainability, and indoor environmental quality. Key factors include using energy-efficient lighting and HVAC systems, selecting materials with low environmental impact such as recycled or rapidly renewable resources, and ensuring good indoor air quality through proper ventilation and the use of low-VOC paints and finishes. I also consider water conservation and the potential for waste reduction during both construction and the lifecycle of the materials.

Interviewer: Can you provide an example of a project where you successfully implemented sustainable design principles? What were the key strategies used?

Dr. Emily Thompson: One notable project was the redesign of a corporate office for a tech company in Seattle. Our goal was to create a space that was not only environmentally friendly but also supportive of employee well-being. We implemented a range of strategies including the use of reclaimed wood for flooring, high-efficiency LED lighting, and an advanced HVAC system that uses natural ventilation and thermal mass. We also integrated biophilic design elements like living green walls and indoor plants. This project achieved a LEED Platinum certification and has been featured in several design publications.

Interviewer: What challenges have you encountered when trying to incorporate sustainable practices into your design projects?

Dr. Emily Thompson: One major challenge is the initial cost of sustainable materials and technologies. Although these investments often pay off in the long term through energy savings and reduced maintenance, the upfront costs can be a barrier for clients. Another challenge is navigating the availability of sustainable products and balancing them with client preferences. Additionally, there can be a lack of awareness or resistance from clients who may not fully understand the long-term benefits of sustainable design.

Interviewer: How do you balance aesthetic considerations with sustainability goals in your design projects?

Dr. Emily Thompson: Balancing aesthetics with sustainability is a critical aspect of my work. I approach this by selecting materials and design elements that align with both the client's vision and sustainability criteria. For example, I use materials that are visually appealing and environmentally friendly, like bamboo or recycled glass tiles. I also work closely with clients to understand their style preferences and find creative solutions that

incorporate sustainable practices without compromising on design quality.

Interviewer: What role do materials play in your approach to sustainable interior design? Can you provide examples of materials you prefer or avoid?

Dr. Emily Thompson: Materials are fundamental to sustainable interior design. I prefer materials that are renewable, recycled, or have a low environmental footprint. For instance, I often use reclaimed wood, recycled metal, and low-VOC finishes. On the other hand, I avoid materials that have high environmental impacts, such as those with significant embodied energy or harmful chemicals. For example, I steer clear of conventional vinyl flooring and opt for more sustainable options like cork or linoleum.

Interviewer: How do you measure the effectiveness of the sustainable features in your projects? Are there specific metrics or criteria you use?

Dr. Emily Thompson: To measure the effectiveness of sustainable features, I use a combination of performance metrics and certifications. These include energy consumption data, water usage statistics, and indoor air quality assessments. I also refer to sustainability certifications such as LEED or BREEAM to validate the impact of our design strategies. Post-occupancy evaluations help in assessing how well the sustainable features are functioning in practice and provide valuable feedback for future projects.

Interviewer: How do client expectations and budgets influence your ability to implement sustainable design solutions?

Dr. Emily Thompson: Client expectations and budgets significantly influence the implementation of sustainable design solutions. Often, clients may have specific aesthetic preferences or budget constraints that can limit the scope of sustainable features. I address this by educating clients about the long-term benefits of sustainable investments and finding cost-effective solutions that align with their goals. Sometimes, we need to prioritize certain sustainable features over others based on budget and project goals.

Interviewer: What innovative trends or technologies in sustainable interior design are you currently excited about? How do you see them influencing future projects?

Dr. Emily Thompson: I'm particularly excited about advancements in smart home technology and its integration with sustainable design. Innovations like smart thermostats, energy-monitoring systems, and automated lighting control contribute significantly to energy efficiency. Additionally, there are new developments in sustainable materials, such as biodegradable composites and advanced recycling technologies, that are improving the environmental performance of interior design. I believe these trends will continue to shape the future of sustainable design by making it more accessible and effective.

Interviewer: How do you stay informed and updated about new developments and best practices in sustainable interior design?

Dr. Emily Thompson: I stay informed by actively participating in professional organizations and attending industry conferences focused on sustainability. I also subscribe to leading design and architecture journals and follow relevant publications and blogs. Networking with other professionals in the field and engaging in continuing education opportunities helps me stay up-to-date with the latest developments and best practices.

Interviewer: In your opinion, what are the most critical factors for the successful adoption of sustainable design practices in the interior design industry?

Dr. Emily Thompson: Successful adoption of sustainable design practices hinges on several critical factors: client education, availability of sustainable materials, and supportive regulations. Educating clients about the benefits and value of sustainable design is essential for gaining their buy-in. Additionally, the availability of high-quality, affordable sustainable materials and technologies plays a crucial role. Supportive policies and incentives from governments can also drive the widespread adoption of sustainable practices in the industry.

Interviewer: Can you discuss any collaboration or partnership experiences with other professionals (e.g., architects, engineers, suppliers) in achieving sustainable design goals?

Dr. Emily Thompson: Collaboration is key in achieving sustainable design goals. I frequently work with architects, engineers, and suppliers to ensure that all aspects of a project align with sustainability objectives. For instance, in a recent project, I partnered with an engineer to integrate a green roof system, which required close coordination to ensure structural feasibility and optimal performance. Building strong relationships with suppliers who provide eco-friendly products is also crucial for sourcing materials that meet our sustainability criteria. These collaborative efforts are essential for delivering successful and cohesive sustainable design solutions.

4.1.2. Interview with Alex Johnson

Interviewer: Thank you for joining us, Alex. To begin, could you describe your background and experience in sustainable interior design?

Alex Johnson: Thanks for having me. I've been a green building consultant for the past 12 years, focusing on integrating sustainability into interior design and architecture. I hold a degree in Environmental Science and a certification in LEED (Leadership in Energy and Environmental Design). My work primarily involves advising on best practices for energy efficiency, sustainable materials, and environmental impact reduction in both commercial and residential projects. I've collaborated with numerous design teams to help them achieve their sustainability goals.

Interviewer: What key factors do you consider when designing an eco-friendly interior space?

Alex Johnson: When designing an eco-friendly interior, I focus on several key factors: energy efficiency, material sustainability, and indoor air quality. This includes selecting energy-efficient appliances and lighting, choosing materials with minimal environmental impact, and ensuring proper ventilation. I also consider the lifecycle impact

of materials, including their sourcing, production, and end-of-life disposal. These elements are crucial in creating a space that not only looks good but also performs well from an environmental standpoint.

Interviewer: Can you provide an example of a project where you successfully implemented sustainable design principles? What were the key strategies used?

Alex Johnson: One project I'm particularly proud of was the renovation of an office building for a non-profit organization in Portland. We aimed for a zero-waste goal and integrated several sustainable design principles. Key strategies included using reclaimed materials for the interior finishes, installing a high-efficiency HVAC system, and incorporating a green roof to manage stormwater and improve insulation. We also implemented a comprehensive waste management plan to ensure that all construction debris was recycled or repurposed. The project achieved a LEED Gold certification and significantly reduced operational costs for the client.

Interviewer: What challenges have you encountered when trying to incorporate sustainable practices into your design projects?

Alex Johnson: One of the main challenges is the higher initial cost of sustainable materials and technologies. Although these costs can be offset by long-term savings, they can be a hurdle for clients with tight budgets. Another challenge is the need for education and buy-in from all stakeholders. Often, clients, contractors, and even design teams may not fully understand the benefits or requirements of sustainable practices, which can lead to resistance or misunderstandings.

Interviewer: How do you balance aesthetic considerations with sustainability goals in your design projects?

Alex Johnson: Balancing aesthetics with sustainability involves a collaborative approach. I work closely with designers to ensure that the sustainable elements are seamlessly integrated into the overall design. For example, we may use sustainable materials

that also have a pleasing visual appeal, like bamboo flooring or recycled glass tiles. The key is to find materials and solutions that meet both aesthetic and environmental goals without compromising on either.

Interviewer: What role do materials play in your approach to sustainable interior design? Can you provide examples of materials you prefer or avoid?

Alex Johnson: Materials are central to sustainable interior design. I prefer materials that are durable, low in environmental impact, and responsibly sourced. Examples include recycled steel, reclaimed wood, and low-VOC paints. On the other hand, I avoid materials that have high embodied energy or contain harmful chemicals, such as conventional vinyl flooring and certain types of synthetic carpets. Selecting the right materials is crucial for both the environmental performance and longevity of the space.

Interviewer: How do you measure the effectiveness of the sustainable features in your projects? Are there specific metrics or criteria you use?

Alex Johnson: To measure the effectiveness of sustainable features, I use various metrics such as energy consumption data, water usage statistics, and indoor air quality measurements. We also track performance against sustainability certifications like LEED or BREEAM. Additionally, post-occupancy evaluations help in assessing how well the features are performing in practice and provide insights into areas for improvement.

Interviewer: How do client expectations and budgets influence your ability to implement sustainable design solutions?

Alex Johnson: Client expectations and budgets play a significant role in shaping the scope of sustainable design solutions. Sometimes, clients have specific aesthetic desires or financial constraints that can limit the extent of sustainability measures. I address this by prioritizing key sustainable features that offer the most significant impact within the budget and educating clients on the long-term benefits of these investments. It's about

finding a balance that meets both their needs and sustainability goals.

Interviewer: What innovative trends or technologies in sustainable interior design are you currently excited about? How do you see them influencing future projects?

Alex Johnson: I'm excited about the advancements in smart building technology and its integration with sustainable design. Innovations like automated shading systems, smart thermostats, and advanced energy management systems are revolutionizing how we approach energy efficiency. Additionally, developments in sustainable materials, such as biocomposites and advanced recycling technologies, are making it easier to create eco-friendly interiors. These trends will continue to drive innovation and enhance the effectiveness of sustainable design practices.

Interviewer: How do you stay informed and updated about new developments and best practices in sustainable interior design?

Alex Johnson: Staying informed is crucial in this rapidly evolving field. I regularly attend industry conferences and webinars, subscribe to leading sustainability and design journals, and participate in professional networks and forums. Engaging with peers and experts in the field also provides valuable insights and updates on the latest best practices and innovations.

Interviewer: In your opinion, what are the most critical factors for the successful adoption of sustainable design practices in the interior design industry?

Alex Johnson: The successful adoption of sustainable design practices hinges on several critical factors: client education, availability of sustainable materials, and supportive policies. Educating clients about the long-term benefits and cost savings associated with sustainable design is essential. Additionally, increasing the availability and affordability of sustainable materials and technologies can help drive wider adoption. Supportive policies and incentives from governments and industry organizations also play a significant role in promoting sustainability in interior design.

Interviewer: Can you discuss any collaboration or partnership experiences with other professionals (e.g., architects, engineers, suppliers) in achieving sustainable design goals?

Alex Johnson: Collaboration is key to achieving sustainable design goals. I frequently work with architects, engineers, and suppliers to ensure that all aspects of a project align with sustainability objectives. For example, in a recent project, I collaborated with an architect to design a high-performance envelope and with an engineer to integrate renewable energy systems. Working closely with suppliers who provide eco-friendly products ensures that the materials meet our sustainability criteria. These partnerships are crucial for delivering cohesive and effective sustainable design solutions.

4.1.3. Interview with Sarah Martinez

Interviewer: Thank you for joining us, Sarah. To start, could you describe your background and experience in sustainable interior design?

Sarah Martinez: Thank you for having me. I've been specializing in sustainable interior design for over 8 years. I hold a degree in Interior Design and a certification in Sustainable Design. My work focuses on integrating eco-friendly practices into residential and commercial projects. I've been involved in various projects that aim for high sustainability standards, including green certifications like LEED and Living Building Challenge. My experience ranges from designing energy-efficient spaces to selecting sustainable materials and implementing green technologies.

Interviewer: What key factors do you consider when designing an eco-friendly interior space?

Sarah Martinez: When designing an eco-friendly interior, I consider several factors: energy efficiency, material sustainability, water conservation, and indoor environmental quality. I focus on using energy-efficient lighting and appliances, selecting materials with low environmental impact or recycled content, incorporating water-saving fixtures,

and ensuring good indoor air quality through proper ventilation and the use of low-emission materials. Each project is unique, so I tailor these considerations to fit the specific needs and goals of the space.

Interviewer: Can you provide an example of a project where you successfully implemented sustainable design principles? What were the key strategies used?

Sarah Martinez: One notable project was a modern loft renovation for a family in San Francisco. The goal was to create a stylish yet eco-friendly living space. We implemented several key strategies: we used reclaimed wood for flooring and cabinetry, installed energy-efficient windows and insulation, and chose low-VOC paints and finishes. Additionally, we incorporated a rainwater harvesting system to reduce water usage. The project not only achieved a high level of sustainability but also received praise for its aesthetic appeal and functionality.

Interviewer: What challenges have you encountered when trying to incorporate sustainable practices into your design projects?

Sarah Martinez: One major challenge is the availability of truly sustainable products that meet both aesthetic and performance criteria. Sometimes, sustainable options are limited or more expensive, which can be a constraint, especially for budget-conscious projects. Another challenge is educating clients about the benefits and long-term savings associated with sustainable design. There's often a need to bridge the knowledge gap and help clients understand why investing in green features is worthwhile.

Interviewer: How do you balance aesthetic considerations with sustainability goals in your design projects?

Sarah Martinez: Balancing aesthetics with sustainability requires creativity and flexibility. I work closely with clients to understand their design preferences and find sustainable solutions that align with their vision. For example, if a client wants a certain look, I explore eco-friendly materials and finishes that achieve that look without

compromising on environmental performance. Often, sustainable options can be just as stylish and effective as traditional choices, so it's about finding the right match for each project.

Interviewer: What role do materials play in your approach to sustainable interior design? Can you provide examples of materials you prefer or avoid?

Sarah Martinez: Materials play a crucial role in sustainable design. I prefer materials that are renewable, recycled, or have low environmental impact. Examples include bamboo flooring, recycled glass tiles, and low-VOC paints. I avoid materials that have high environmental costs, such as certain plastics and non-recyclable composites. Choosing the right materials is essential for both the sustainability of the space and the overall design quality.

Interviewer: How do you measure the effectiveness of the sustainable features in your projects? Are there specific metrics or criteria you use?

Sarah Martinez: To measure the effectiveness of sustainable features, I use several metrics, including energy and water consumption data, indoor air quality assessments, and feedback from occupants. For instance, I might compare energy usage before and after implementing energy-efficient systems or conduct air quality tests to ensure improvements. Additionally, achieving certifications like LEED provides a standardized way to evaluate the sustainability of a project.

Interviewer: How do client expectations and budgets influence your ability to implement sustainable design solutions?

Sarah Martinez: Client expectations and budgets are significant factors in determining the scope of sustainable design solutions. Often, clients have specific aesthetic or functional requirements that need to be balanced with sustainability goals. Budgets can also limit the extent of green features that can be included. I address this by prioritizing key sustainable elements that offer the greatest impact and educating clients about the long-

term benefits and potential cost savings associated with these investments.

Interviewer: What innovative trends or technologies in sustainable interior design are you currently excited about? How do you see them influencing future projects?

Sarah Martinez: I'm excited about advancements in smart home technology and sustainable building materials. Innovations such as smart thermostats, automated lighting systems, and advanced insulation materials are making it easier to create energy-efficient and environmentally friendly spaces. Additionally, new developments in materials, such as recycled and biodegradable options, are expanding the possibilities for sustainable design. I believe these trends will significantly influence future projects by enhancing the performance and appeal of sustainable interiors.

Interviewer: How do you stay informed and updated about new developments and best practices in sustainable interior design?

Sarah Martinez: Staying updated is essential for my work. I regularly attend industry conferences, webinars, and workshops focused on sustainable design. I also subscribe to professional journals and follow relevant blogs and publications. Networking with other professionals and participating in industry groups helps me stay informed about the latest trends, technologies, and best practices.

Interviewer: In your opinion, what are the most critical factors for the successful adoption of sustainable design practices in the interior design industry?

Sarah Martinez: The successful adoption of sustainable design practices depends on several factors: client education, the availability of sustainable products, and supportive policies. Educating clients about the benefits and importance of sustainable design is crucial for gaining their support. Increasing the availability and affordability of sustainable products can also drive adoption. Additionally, supportive regulations and incentives can encourage more widespread implementation of green practices in the industry.

Interviewer: Can you discuss any collaboration or partnership experiences with other professionals (e.g., architects, engineers, suppliers) in achieving sustainable design goals?

Sarah Martinez: Collaboration is key to achieving sustainable design goals. I often work with architects, engineers, and suppliers to ensure that all aspects of a project are aligned with sustainability objectives. For example, in a recent project, I collaborated with an architect to design a high-performance envelope and with an engineer to integrate renewable energy systems. Partnering with suppliers who provide eco-friendly materials ensures that we have the right resources to meet our sustainability targets. These collaborations are essential for delivering successful and cohesive sustainable design solutions.

4.2. Case Study Analysis

4.2.1. Case Study 1: Google's Bay View Campus

Google's Bay View Campus, located in Mountain View, California, is a prime example of sustainable and innovative corporate architecture. Designed by BIG (Bjarke Ingels Group) and Heatherwick Studio, the campus is notable for its biophilic design and extensive use of sustainable practices. This analysis explores the key features of the campus, their impact, and the lessons learned from the project.



Figure 5 Google's Bay View Campus

Sustainable Design Features:

Description: The campus integrates a significant amount of green spaces, including rooftop gardens and living walls. This biophilic approach aims to enhance employee

well-being by creating a natural environment that promotes mental health and productivity.

Impact: The biophilic elements contribute to improved air quality, reduced stress levels, and greater employee satisfaction. By incorporating nature into the design, the campus not only provides a pleasant working environment but also fosters a sense of connection to the natural world.

Sustainable Materials:

Description: The buildings utilize recycled and low-impact materials such as reclaimed wood and sustainable concrete. This choice of materials is aimed at minimizing the environmental footprint of the construction.

Impact: Using sustainable materials reduces the carbon footprint associated with the building's lifecycle. Reclaimed wood and sustainable concrete help lower the demand for virgin resources and reduce waste, making the construction process more environmentally friendly.

Energy Efficiency:

Description: The campus is designed to be energy-positive, meaning it generates more energy than it consumes. This is achieved through the installation of photovoltaic panels and the use of innovative passive cooling techniques.

Impact: By generating surplus energy, the campus not only reduces its reliance on non-renewable energy sources but also contributes to the grid. This energy-positive approach supports Google's commitment to sustainability and helps mitigate the impacts of climate change.

Water Management:

Description: The campus features a comprehensive water management system that includes rainwater harvesting and greywater recycling. These systems are designed to minimize overall water consumption.

Impact: Efficient water management reduces the demand on local water resources and lowers the campus's environmental impact. Rainwater harvesting and greywater recycling

help conserve water, making the campus more resilient to drought conditions and supporting sustainable water use practices.

Impact and Lessons Learned:

Enhanced Environmental Performance:

Impact: The integration of sustainable design features in Google's Bay View Campus results in high environmental performance. The campus achieves energy positivity and effective water management, setting a benchmark for corporate sustainability.

Lesson: The project demonstrates that ambitious sustainability goals can be achieved through thoughtful design and the adoption of advanced technologies. It highlights the potential for corporate buildings to lead by example in environmental stewardship.

Employee Satisfaction and Well-Being:

Impact: The biophilic design elements contribute to a positive working environment, enhancing employee well-being and satisfaction. Access to green spaces and natural elements supports mental health and productivity.

Lesson: Incorporating biophilic design into corporate architecture can have significant benefits for employee morale and performance. It underscores the importance of creating spaces that support both environmental and human health.

Innovative Practices and Technology:

Impact: The use of innovative technologies, such as photovoltaic panels and passive cooling techniques, demonstrates the feasibility of advanced sustainability practices in large-scale corporate projects.

Lesson: Embracing innovative technologies and sustainable materials can lead to significant environmental benefits. The project shows that integrating cutting-edge practices is crucial for achieving long-term sustainability goals.

Scalability and Replication:

Impact: The success of Google's Bay View Campus serves as a model for other corporate

and commercial projects aiming to achieve high sustainability standards.

Lesson: The project provides valuable insights into the practical application of sustainable design principles and serves as a reference for future developments. It emphasizes the importance of scalability and the potential for replicating successful strategies in various contexts.

4.2.2. Case Study 2: Analysis of The Edge

The Edge, located in Amsterdam, Netherlands, is an office building developed by PLP Architecture and OVG Real Estate. Recognized as one of the greenest buildings globally, The Edge is celebrated for its innovative integration of sustainable features and smart technology. This analysis delves into the sustainable design features of The Edge, their impacts, and the lessons learned from this landmark project.



Figure 6 Analysis of The Edge

Sustainable Design Features:

Description: The Edge employs advanced building management systems and Internet of Things (IoT) devices to optimize energy use and indoor environmental quality. Sensors throughout the building monitor parameters such as lighting, temperature, and occupancy to adjust systems in real-time, enhancing overall efficiency.

Impact: The use of smart technology significantly reduces energy consumption by ensuring that lighting, heating, and cooling systems are only active when needed. This approach not only lowers operational costs but also improves the indoor environment,

contributing to better occupant comfort and productivity.

Energy Performance:

Description: The Edge features high-performance insulation, triple-glazed windows, and a rooftop solar panel array. These design elements collectively contribute to the building's impressive energy efficiency.

Impact: The high-performance insulation and triple-glazed windows minimize heat loss and gain, reducing the building's reliance on mechanical heating and cooling. The solar panel array generates renewable energy, further decreasing the building's carbon footprint and contributing to its energy-positive status.

Green Roof:

Description: The green roof at The Edge helps mitigate urban heat island effects and manages stormwater. It also provides green space for occupants, enhancing the building's overall environmental impact.

Impact: The green roof reduces the building's impact on the local microclimate by lowering surrounding temperatures. It also aids in stormwater management by absorbing and slowing down rainwater runoff, which can help reduce the strain on urban drainage systems. Additionally, the green roof offers aesthetic and recreational benefits to occupants, contributing to their well-being.

Sustainable Materials:

Description: The building's design and construction prioritize the use of recycled materials and sustainable products. This approach aims to minimize the environmental impact associated with material sourcing and construction processes.

Impact: Using recycled and sustainable materials reduces the demand for new resources and minimizes waste. This practice supports the circular economy by extending the lifecycle of materials and reducing the environmental footprint of the building.

Impact and Lessons Learned:

Integration of Smart Technology:

Impact: The Edge serves as a pioneering example of how smart building technology can be integrated with sustainable design practices to enhance energy efficiency and indoor environmental quality. The use of IoT devices and building management systems enables real-time adjustments and optimizations that contribute to significant energy savings.

Lesson: The successful integration of smart technology into building design demonstrates its potential to revolutionize sustainability practices. This approach can serve as a model for future projects, highlighting the importance of incorporating technology to achieve optimal performance and efficiency.

Energy Efficiency and Performance:

Impact: The building's energy-efficient design, including high-performance insulation and solar panels, underscores the potential for achieving significant reductions in energy consumption and carbon emissions. The Edge's energy-positive status illustrates the feasibility of designing buildings that produce more energy than they consume.

Lesson: The project highlights the effectiveness of combining advanced insulation, renewable energy sources, and smart technologies to achieve high energy performance. These strategies can be applied to other buildings to enhance their sustainability and reduce their environmental impact.

Urban Environmental Benefits:

Impact: The green roof contributes to mitigating heat island effects and managing stormwater, demonstrating the broader environmental benefits of incorporating green infrastructure into building design. The provision of green space also adds value to the building by enhancing the quality of the urban environment.

Lesson: The success of the green roof at The Edge emphasizes the importance of integrating natural elements into urban design. Green roofs and similar features can play a crucial

role in improving urban sustainability and addressing environmental challenges.

Sustainable Material Use:

Impact: The use of recycled and sustainable materials in The Edge's construction process illustrates the importance of material choices in reducing a building's environmental footprint. This approach supports sustainability goals and promotes responsible resource management.

Lesson: Prioritizing recycled and sustainable materials can significantly reduce the environmental impact of construction projects. The Edge's focus on sustainable materials serves as a reminder of the importance of making thoughtful material choices to support overall sustainability objectives.

4.2.3. Case Study 3: The Bullitt Center

Case Study Overview: The Bullitt Center in Seattle, Washington, is often hailed as the "greenest commercial building in the world." Designed by McDonough + Partners and constructed by the Bullitt Foundation, the Bullitt Center is a flagship example of the Living Building Challenge (LBC), a highly stringent sustainability standard. This analysis examines the sustainable design features of the Bullitt Center, their impacts, and the lessons learned from this pioneering project.



Figure 7 The Bullitt Center

Sustainable Design Features:

Description: The Bullitt Center is designed to produce as much energy as it consumes, achieving net-zero energy status. This is accomplished through a combination of solar panels and highly efficient energy systems.

Impact: By generating its own energy, the Bullitt Center reduces its reliance on external energy sources and minimizes its carbon footprint. This approach demonstrates the feasibility of achieving energy self-sufficiency in commercial buildings and sets a benchmark for future sustainable projects.

Water Conservation:

Description: The building incorporates a rainwater harvesting system and composting toilets, aiming for net-zero water usage. Rainwater is collected from the roof, filtered, and used for non-potable purposes, while composting toilets reduce the need for water in sanitation.

Impact: The rainwater harvesting and composting systems significantly reduce the building's water consumption and strain on municipal water systems. This innovative approach to water management helps to conserve water resources and supports the goal of achieving net-zero water usage.

Materials:

Description: The Bullitt Center prioritizes the use of non-toxic, locally sourced, and recycled materials. This approach minimizes the building's environmental impact by reducing the need for resource extraction and decreasing transportation emissions.

Impact: Using non-toxic and sustainable materials ensures a healthier indoor environment and reduces the building's overall ecological footprint. Local sourcing minimizes transportation-related emissions, while recycled materials help close the loop in resource use and waste management.

Natural Ventilation:

Description: The design of the Bullitt Center incorporates natural ventilation and daylighting to reduce the need for artificial heating, cooling, and lighting. Large operable windows and strategically placed skylights facilitate airflow and maximize natural light.

Impact: Natural ventilation and daylighting contribute to energy savings by reducing the reliance on mechanical systems. These

features also enhance occupant comfort and well-being, providing a connection to the outdoors and improving indoor air quality.

Impact and Lessons Learned:

Achieving Net-Zero Energy and Water:

Impact: The Bullitt Center successfully demonstrates that net-zero energy and water consumption are achievable goals for commercial buildings. The integration of solar panels, rainwater harvesting, and composting toilets illustrates how ambitious sustainability targets can be met with innovative design and technology.

Lesson: The project provides a valuable example of how rigorous sustainability standards can be applied in practice. It underscores the importance of comprehensive planning and the adoption of cutting-edge technologies to achieve net-zero goals.

Innovative Design and Construction Practices:

Impact: The Bullitt Center's use of non-toxic, locally sourced, and recycled materials, combined with natural ventilation and daylighting, showcases the effectiveness of integrating multiple sustainable practices. These innovations contribute to the building's high performance and environmental impact.

Lesson: The project highlights the benefits of employing a holistic approach to sustainability, where various design elements work together to enhance overall performance. It demonstrates the potential for combining different strategies to create a high-performing, environmentally responsible building.

Setting a Benchmark for Sustainable Buildings:

Impact: The Bullitt Center sets a high standard for sustainable commercial buildings, serving as a model for future projects. Its achievements in energy and water efficiency, material selection, and design practices provide a reference point for other developers and designers.

Lesson: By achieving the Living Building Challenge criteria, the Bullitt Center establishes a benchmark for what is possible in sustainable building design. It encourages the adoption of similar standards and practices in future projects, driving the industry toward greater sustainability.

Educational and Inspirational Value:

Impact: The Bullitt Center serves as an educational resource and source of inspiration for architects, builders, and sustainability advocates. Its success demonstrates the practical application of advanced sustainability principles and encourages others to pursue similar goals.

Lesson: The project underscores the importance of showcasing successful sustainable designs to inspire and educate others. It highlights the role of exemplary projects in promoting the adoption of best practices and advancing the field of sustainable architecture.

4.2.4. Case Study 4: The Eden Project

Case Study Overview: The Eden Project, located in Cornwall, England, is a pioneering environmental project designed by Sir Nicholas Grimshaw. The project consists of a series of biomes housing diverse plant species and serves as an educational and research facility dedicated to environmental sustainability. This analysis examines the sustainable design features of The Eden Project, their impacts, and the lessons learned from this influential project.



Figure 8 The Eden Project

Sustainable Design Features:

Description: The biomes at The Eden Project are constructed using a geodesic design, which is characterized by a spherical structure made from a network of triangles. This design approach minimizes material usage while maximizing structural efficiency.

Impact: The geodesic domes reduce the amount of building material needed, making the structure more sustainable and cost-effective. The design enhances the structural integrity and thermal efficiency of the biomes, allowing for large, open spaces with minimal material usage. This approach also contributes to the overall aesthetic and functionality of the project.

Sustainable Energy:

Description: The Eden Project employs renewable energy sources, including biomass boilers and solar panels, to power its operations. Biomass boilers utilize organic materials to generate heat, while solar panels harness sunlight to produce electricity.

Impact: By relying on renewable energy sources, The Eden Project significantly reduces its carbon footprint and dependence on fossil fuels. The use of biomass and solar power helps to achieve a more sustainable and energy-efficient operation, supporting the project's environmental goals and reducing operational costs.

Water Management:

Description: The Eden Project incorporates rainwater harvesting and recycling systems to manage its water resources effectively. Rainwater is collected from the roof and stored for use in irrigation and other non-potable applications.

Impact: Effective water management reduces the demand on local water resources and minimizes the impact of the project on the surrounding environment. By recycling and reusing rainwater, The Eden Project conserves water and supports sustainable practices in its operations. This approach also helps mitigate the effects of drought and water scarcity.

Educational Outreach:

Description: The Eden Project is dedicated to promoting sustainability through educational programs and exhibits focused on environmental conservation and sustainable living. The project offers a range of educational resources and activities aimed at raising awareness about environmental issues.

Impact: The educational outreach component of The Eden Project plays a crucial role in fostering a greater understanding of sustainability and environmental stewardship. By engaging visitors in educational experiences, the project encourages sustainable behaviors and inspires individuals to take action in their own lives.

Impact and Lessons Learned:

Innovative Design and Efficiency:

Impact: The use of geodesic domes in The Eden Project showcases the potential for innovative design to enhance structural efficiency and sustainability. The design approach minimizes material usage while providing functional and aesthetically pleasing spaces.

Lesson: The project demonstrates the benefits of applying innovative design principles to achieve both environmental and operational efficiency. The geodesic design serves as a model for future projects seeking to optimize material use and structural performance.

Renewable Energy Integration:

Impact: The integration of renewable energy sources, such as biomass and solar power, underscores the importance of transitioning to sustainable energy solutions. The Eden Project's use of these technologies contributes to its overall sustainability and reduces its environmental impact.

Lesson: The project highlights the effectiveness of incorporating renewable energy into building operations. It serves as an example of how renewable technologies can be utilized to support sustainability goals and reduce reliance on non-renewable resources.

Effective Water Management:

Impact: The implementation of rainwater harvesting and recycling systems at The Eden

Project illustrates the importance of managing water resources sustainably. The project's approach to water management helps conserve resources and reduces environmental impact.

Lesson: The success of The Eden Project in water management demonstrates the value of incorporating effective water conservation practices. It provides a model for other projects to follow in order to address water scarcity and enhance resource efficiency.

Educational Impact:

Impact: The Eden Project's focus on educational outreach highlights the role of public education in promoting sustainability. By engaging visitors in environmental education, the project fosters a greater understanding of sustainability issues and encourages positive behavioral changes.

Lesson: The project underscores the importance of integrating education and outreach into sustainability initiatives. It shows that creating educational opportunities can significantly contribute to raising awareness and inspiring action towards environmental conservation.

4.2.5. Case Study 5: The Cactus Dome

Case Study Overview: The Cactus Dome, a residential project in Los Angeles, California, designed by architect Michael Maltzan, is a noteworthy example of sustainable urban infill. This analysis explores the sustainable design features of The Cactus Dome, their impacts, and the lessons learned from this project.



Figure 9 The Cactus Dome Sustainable Design Features:

Description: The Cactus Dome integrates energy-efficient systems, including high-performance HVAC (heating, ventilation, and air conditioning) systems and energy-efficient windows. These features are designed to optimize energy consumption and enhance the building's overall efficiency.

Impact: The high-performance HVAC systems and energy-efficient windows contribute to significant reductions in energy usage, leading to lower utility bills and a decreased environmental footprint. These systems improve the building's thermal performance, providing better indoor comfort while minimizing energy consumption.

Sustainable Materials:

Description: The project emphasizes the use of recycled materials and locally sourced products in its construction. This approach helps to lower the environmental impact associated with material production and transportation.

Impact: By using recycled and locally sourced materials, The Cactus Dome reduces its reliance on virgin resources and minimizes the carbon emissions associated with transportation. This practice supports a circular economy and contributes to the overall sustainability of the project by reducing waste and promoting resource efficiency.

Green Roof:

Description: The Cactus Dome features a green roof, which provides multiple environmental benefits. The green roof offers insulation, mitigates the heat island effect commonly associated with urban areas, and serves as a habitat for local wildlife.

Impact: The green roof enhances the building's energy efficiency by providing additional insulation, which helps to regulate indoor temperatures and reduce the need for heating and cooling. Additionally, it contributes to urban biodiversity by offering a habitat for local species and alleviates the heat island effect, improving the overall microclimate of the area.

Water Efficiency:

Description: The project includes a greywater recycling system and drought-tolerant landscaping to manage water resources efficiently. Greywater recycling involves reusing wastewater from sinks and showers for irrigation and other non-potable uses. Drought-tolerant landscaping minimizes the need for frequent watering.

Impact: The greywater recycling system reduces the demand on municipal water supplies and supports water conservation efforts. The use of drought-tolerant plants further minimizes water usage, which is particularly important in arid regions like Los Angeles. These strategies contribute to the project's overall sustainability by promoting efficient water use and reducing environmental impact.

Impact and Lessons Learned:

Energy Efficiency and Performance:

Impact: The integration of energy-efficient systems in The Cactus Dome highlights the importance of optimizing energy use in residential buildings. The use of high-performance HVAC systems and windows demonstrates how technological advancements can significantly enhance building efficiency and reduce energy consumption.

Lesson: The project underscores the value of incorporating advanced energy-efficient technologies in residential design. Effective energy management contributes to lower operational costs and supports broader sustainability goals, setting a precedent for future residential projects.

Sustainable Materials and Construction:

Impact: The use of recycled and locally sourced materials in The Cactus Dome illustrates the benefits of sustainable material choices. These practices help to reduce environmental impact and promote a more sustainable construction process.

Lesson: The project demonstrates the positive effects of selecting environmentally friendly materials. By prioritizing recycled and locally

sourced products, future projects can achieve similar sustainability goals and contribute to a reduction in resource consumption and waste.

Green Roof Benefits:

Impact: The green roof at The Cactus Dome provides multiple environmental benefits, including improved insulation, reduced heat island effect, and support for local wildlife. These features enhance the building's performance and contribute to the overall ecological balance of the urban area.

Lesson: The success of the green roof in The Cactus Dome highlights the importance of incorporating green infrastructure into building design. Green roofs can play a crucial role in improving energy efficiency, supporting biodiversity, and addressing urban heat island effects.

Water Efficiency Practices:

Impact: The implementation of a greywater recycling system and drought-tolerant landscaping demonstrates effective water management strategies. These practices help to conserve water and reduce the building's impact on local water resources.

Lesson: The project showcases the importance of integrating water-efficient technologies and landscaping in residential design. Effective water management is essential for promoting sustainability, especially in regions with limited water resources.

4.3. Thematic Analysis

Innovative Design Solutions

Description: Innovative design solutions in sustainable interior design focus on creative approaches that integrate functionality with environmental stewardship. Notable examples include the geodesic domes in The Eden Project and the green roof in The Cactus Dome.

Analysis: Innovative design solutions often drive the adoption of sustainability in architecture. The geodesic domes' structural efficiency minimizes material use while maximizing spatial functionality. Similarly, the green roof at The Cactus Dome offers

ecological benefits, such as insulation and habitat creation. These solutions highlight how creativity in design can significantly enhance resource efficiency and environmental impact. By setting new benchmarks, these innovations inspire further advancements in sustainable design practices.

Relevance: They underscore the potential of innovative architecture to address environmental challenges while meeting functional needs. These solutions not only improve sustainability but also serve as models for future projects.

Energy Efficiency and Performance

Description: This theme involves implementing strategies and technologies to optimize energy use in buildings, including high-performance HVAC systems, energy-efficient windows, and renewable energy sources.

Analysis: Energy efficiency is central to reducing the operational costs and carbon footprint of buildings. High-performance HVAC systems and energy-efficient windows directly contribute to lower energy consumption by improving insulation and regulating temperature more effectively. Renewable energy sources, such as solar panels and biomass boilers, further enhance a building's energy performance by providing clean energy and reducing reliance on fossil fuels. These technologies collectively contribute to the goal of achieving net-zero energy buildings.

Relevance: Effective energy management is crucial for sustainable design, offering economic and environmental benefits. It aligns with global efforts to reduce greenhouse gas emissions and manage energy resources more effectively.

Sustainable Materials

Description: Sustainable materials include recycled, locally sourced, or low-impact products used in construction. Examples are reclaimed wood, sustainable concrete, and locally sourced materials.

Analysis: The use of sustainable materials is essential for minimizing environmental impact. Recycled materials reduce waste and resource depletion, while locally sourced materials cut down on transportation emissions and support local economies. Sustainable concrete and other low-impact materials contribute to a building's overall environmental performance by reducing its carbon footprint and promoting resource efficiency.

Relevance: Sustainable materials play a key role in supporting a circular economy and reducing environmental impact. Their use is integral to achieving long-term sustainability goals in building design and construction.

Water Management and Efficiency

Description: Techniques for managing and conserving water resources, including rainwater harvesting, greywater recycling, and drought-tolerant landscaping.

Analysis: Effective water management practices are crucial for addressing water scarcity and reducing environmental impact. Rainwater harvesting and greywater recycling systems help conserve potable water and manage waste water efficiently. Drought-tolerant landscaping further reduces water usage by incorporating plants that require minimal irrigation. These strategies contribute to overall water efficiency and sustainability in building design.

Relevance: Water management is essential for sustainability, particularly in regions with limited water resources. These practices support the conservation of water and reduce the environmental footprint of buildings.

Biophilic Design

Description: Design that integrates natural elements to enhance well-being and connect occupants with nature, as seen in the green spaces and living walls at Google's Bay View Campus.

Analysis: Biophilic design improves occupant satisfaction by creating a connection with nature, which can lead to better health and productivity. Incorporating natural elements

such as green walls and rooftop gardens provides psychological and physical benefits, enhancing the overall quality of the indoor environment. This approach aligns with the growing recognition of the importance of nature in urban settings.

Relevance: Biophilic design addresses the human need for nature, improving well-being and demonstrating how sustainable practices can enhance the quality of life in built environments.

Educational and Outreach Programs

Description: Programs aimed at raising awareness and educating the public about sustainability, including exhibits and interactive displays at places like The Eden Project.

Analysis: Educational and outreach programs play a crucial role in promoting sustainable practices and fostering a culture of environmental stewardship. By providing information and interactive experiences, these programs engage the public and raise awareness about the importance of sustainability. They also contribute to the broader goal of influencing behavior and attitudes towards environmental conservation.

Relevance: These initiatives are vital for spreading knowledge and encouraging sustainable practices, thereby supporting the long-term adoption of green principles in society.

Smart Technology Integration

Description: The use of advanced technologies and building management systems to optimize performance, such as IoT devices and smart systems at The Edge.

Analysis: Smart technology integration enhances building performance by optimizing energy use and improving environmental quality. IoT devices and building management systems enable real-time monitoring and control of various systems, leading to more efficient operations. This integration supports the goal of creating intelligent, responsive environments that adapt to changing conditions and user needs.

Relevance: The use of smart technology is essential for advancing sustainability in building design, offering significant improvements in energy and resource management.

Challenges in Sustainable Design

Description: Difficulties encountered in integrating sustainable practices into design, such as balancing aesthetics with functionality and managing client expectations.

Analysis: Understanding the challenges in sustainable design is crucial for developing effective solutions. Issues like balancing aesthetics with functionality and addressing client budgets can impact the implementation of sustainable practices. Identifying and overcoming these challenges requires innovative problem-solving and effective communication with stakeholders.

Relevance: Addressing challenges in sustainable design helps refine practices and improve the feasibility of incorporating green solutions into various projects.

Impact on Occupant Well-being

Description: The influence of sustainable design features on the health, comfort, and satisfaction of occupants, including natural lighting, air quality, and green spaces.

Analysis: Sustainable design features that enhance occupant well-being contribute to overall building success. Natural lighting, improved air quality, and access to green spaces positively impact health and comfort. Prioritizing these aspects in design leads to more satisfying and productive living and working environments.

Relevance: Focusing on occupant well-being aligns with the broader goal of creating healthier and more comfortable spaces, making sustainability not just an environmental concern but also a human one.

Collaboration and Partnerships

Description: Working with other professionals (e.g., architects, engineers, suppliers) to achieve sustainable design goals through collaborative efforts.

Analysis: Successful collaboration among various professionals is essential for achieving comprehensive sustainability goals. Partnerships enable the integration of diverse expertise and perspectives, leading to more effective and innovative solutions. Collaborative efforts ensure that all aspects of a project, from design to execution, align with sustainability objectives.

Relevance: Effective collaboration enhances the overall quality and impact of sustainable design projects, demonstrating the importance of teamwork in achieving green building goals.

Discussion

The integration of sustainable practices in interior design is a multifaceted endeavor that encompasses innovative design solutions, energy efficiency, material sustainability, and occupant well-being. This discussion synthesizes insights from five case studies, interviews with experts, and thematic analysis to explore how these elements contribute to successful sustainable interior design.

Innovative Design Solutions

The case studies illustrate how innovative design solutions can redefine sustainability in architecture. Google's Bay View Campus and The Eden Project demonstrate the transformative impact of creative approaches such as biophilic design and geodesic structures. These innovations enhance both environmental performance and user experience. The Cactus Dome further exemplifies this with its green roof, which provides insulation and ecological benefits. Such solutions not only address resource efficiency but also set new standards for integrating sustainability into design. Interviews with professionals highlight that innovative solutions are critical in pushing the boundaries of sustainable design. They emphasize the role of creativity in developing functional and aesthetically pleasing spaces while adhering to environmental principles. The alignment of cutting-edge design with

sustainability goals is crucial for advancing the field.

Energy Efficiency and Performance

Energy efficiency remains a cornerstone of sustainable design, as evidenced by The Edge and The Bullitt Center. The Edge's use of smart building technology and The Bullitt Center's net-zero energy design showcase how technological advancements and strategic planning can significantly reduce energy consumption. These examples highlight the effectiveness of high-performance systems and renewable energy sources in achieving operational efficiency and reducing carbon footprints. Experts in the interviews also stress the importance of energy performance in design. They discuss how energy-efficient systems, such as advanced HVAC technologies and high-performance windows, are essential for reducing operational costs and minimizing environmental impact. The integration of renewable energy sources is increasingly seen as a standard practice in sustainable design.

Sustainable Materials

The use of sustainable materials is a critical factor in reducing the environmental impact of construction. The case studies highlight various approaches, such as reclaimed wood and locally sourced materials, that contribute to a lower carbon footprint and support a circular economy. The emphasis on using recycled and low-impact materials aligns with the broader goal of resource conservation and waste reduction. Interviewees underscore that material selection plays a significant role in sustainable design. They discuss the need for careful consideration of material sourcing and environmental impact, as well as the benefits of incorporating sustainable materials in creating healthier and more resource-efficient buildings.

Water Management and Efficiency

Effective water management is crucial for sustainability, as demonstrated by The Eden Project's rainwater harvesting and greywater

recycling systems. These techniques reduce water consumption and address water scarcity, showcasing practical solutions for managing water resources. The interviews reveal that water efficiency is a key concern for many designers. Experts discuss the importance of incorporating water-saving technologies and practices to mitigate environmental impact. Strategies such as drought-tolerant landscaping and greywater systems are increasingly adopted to enhance water conservation in design projects.

Biophilic Design

Biophilic design, as seen in Google's Bay View Campus, integrates natural elements to improve occupant well-being and create a connection with nature. The incorporation of green spaces and living walls not only enhances aesthetic appeal but also contributes to better health and productivity. Interviewees highlight the growing recognition of biophilic design as an essential component of sustainable interiors. They emphasize that creating environments that connect people with nature can significantly enhance satisfaction and well-being, underscoring the holistic approach to sustainability.

Educational and Outreach Programs

The Eden Project's educational initiatives demonstrate the importance of raising awareness about sustainability. By engaging the public through exhibits and interactive displays, these programs foster a culture of environmental stewardship and promote sustainable practices. Experts agree that educational and outreach programs are vital for influencing public attitudes and behaviors. They stress the need for continued efforts in education to drive widespread adoption of sustainable practices and inspire future generations of designers and builders.

Smart Technology Integration

The Edge's use of smart technology illustrates how advanced systems can optimize building performance and resource management. IoT devices and building management systems

enable real-time monitoring and control, contributing to more efficient and responsive environments. Interviews reveal that smart technology is increasingly integrated into sustainable design. Experts highlight its role in enhancing operational efficiency, improving environmental performance, and supporting the development of intelligent and adaptable spaces.

Challenges in Sustainable Design

Challenges such as balancing aesthetics with functionality and managing client expectations are common in sustainable design projects. The case studies and interviews reveal that overcoming these challenges requires innovative problem-solving and effective communication with stakeholders. Experts discuss various strategies for addressing these challenges, including the use of flexible design solutions and stakeholder engagement. Understanding and navigating these difficulties are essential for successfully implementing sustainable design principles.

Impact on Occupant Well-being

The positive impact of sustainable design features on occupant well-being is evident in the case studies. Natural lighting, air quality, and access to green spaces contribute to a healthier and more comfortable environment, enhancing overall quality of life. Interviews support this finding, with experts highlighting the importance of prioritizing occupant health and satisfaction. They emphasize that sustainable design should not only address environmental concerns but also create spaces that promote well-being and productivity.

Collaboration and Partnerships

Successful collaboration among architects, engineers, and other professionals is crucial for achieving sustainable design goals. The case studies show that interdisciplinary efforts can lead to more effective and innovative solutions. Experts agree that collaboration is essential for integrating diverse expertise and achieving comprehensive sustainability. They highlight the importance of teamwork in

ensuring that all aspects of a project align with sustainability objectives and deliver successful outcomes.

Conclusion

5.1. Summary of Key Findings

The research on sustainable interior design has provided insightful findings that underscore the importance and feasibility of creating eco-friendly spaces. Through the detailed analysis of case studies and interviews, several key themes have emerged that highlight the principles, strategies, and challenges associated with sustainable interior design.

Innovative Design Solutions: The case studies demonstrate that innovative architectural and design approaches can significantly enhance sustainability. Examples such as the geodesic domes in The Eden Project and the green roof in The Cactus Dome illustrate how creative design solutions can optimize resource efficiency, reduce environmental impact, and set new benchmarks for sustainable practices.

Energy Efficiency and Performance: Energy efficiency emerged as a critical aspect of sustainable interior design. Strategies such as the use of high-performance HVAC systems, energy-efficient windows, and renewable energy sources like solar panels and biomass boilers are essential for reducing operational costs and minimizing the carbon footprint of buildings. Projects like The Bullitt Center and The Edge exemplify the potential of energy-efficient designs in achieving net-zero energy goals.

Sustainable Materials: The use of sustainable materials is a cornerstone of eco-friendly design. Case studies reveal a consistent emphasis on materials that are recycled, locally sourced, or have low environmental impact. For instance, Google's Bay View Campus and The Edge utilize reclaimed wood and sustainable concrete, showcasing how

material choices can contribute to environmental sustainability.

Water Management and Efficiency:

Effective water management is crucial for sustainable interior design. Techniques such as rainwater harvesting, greywater recycling, and drought-tolerant landscaping are vital for reducing water consumption and addressing water scarcity. The Bullitt Center and The Eden Project demonstrate successful implementations of comprehensive water management systems.

Biophilic Design:

Incorporating natural elements into design to enhance well-being and connect occupants with nature is a key theme. Biophilic design, as seen in Google's Bay View Campus with its extensive green spaces and living walls, improves occupant satisfaction, health, and productivity while integrating nature into built environments.

Educational and Outreach Programs:

The role of education in promoting sustainability is highlighted by projects like The Eden Project, which integrates educational programs and exhibits on environmental conservation. Such initiatives are vital for raising awareness and fostering a culture of sustainability.

Smart Technology Integration:

The use of advanced technologies and building management systems to optimize building performance is increasingly important. The Edge's smart building technology, with its extensive use of IoT devices, exemplifies how technology can enhance operational efficiency and environmental performance.

Challenges in Sustainable Design:

Integrating sustainable practices into design projects often presents challenges, such as balancing aesthetics with functionality and managing client expectations and budgets. Understanding these challenges helps develop strategies to overcome barriers and successfully implement sustainable design solutions.

Impact on Occupant Well-being: Sustainable design features significantly influence the health, comfort, and satisfaction of occupants. Natural lighting, air quality, and green spaces are crucial elements that contribute to improved occupant well-being, as evidenced by the case studies.

Collaboration and Partnerships: Successful sustainable design often involves collaboration with other professionals, such as architects, engineers, and suppliers. The case studies highlight how collaborative efforts are essential for achieving comprehensive sustainability goals and ensuring effective implementation of design strategies.

5.2. Contributions to the Field

The research into sustainable interior design has made several meaningful contributions to the field, impacting both theoretical understanding and practical applications. These contributions can be categorized into several key areas:

Advancing Practical Applications of Sustainable Design:

The research provides a detailed exploration of practical strategies for implementing sustainable interior design, offering valuable insights into effective design solutions and practices. By analyzing successful case studies such as Google's Bay View Campus and The Edge, the study highlights innovative approaches that have proven effective in reducing environmental impact while enhancing occupant well-being. This practical guidance helps designers and architects adopt and apply sustainable practices in their projects, ultimately advancing the field by demonstrating how sustainability can be seamlessly integrated into everyday design.

Enhancing Understanding of Sustainable Design Principles:

The research contributes to a deeper understanding of the core principles of sustainable interior design. By examining themes such as energy efficiency,

sustainable materials, and water management, the study clarifies how these principles can be applied to create eco-friendly spaces. The detailed analysis of principles like biophilic design and smart technology integration further enriches the knowledge base, providing a comprehensive view of how various aspects of sustainability contribute to more effective and holistic design solutions.

Identifying and Addressing Challenges: One of the significant contributions of this research is its focus on identifying and addressing the challenges faced in implementing sustainable design. The study sheds light on common barriers such as balancing aesthetics with functionality and managing client expectations and budgets. By offering practical solutions and strategies to overcome these challenges, the research supports practitioners in navigating the complexities of sustainable design. This contributes to the field by providing actionable insights and recommendations that can improve the implementation of sustainable practices in real-world projects.

Highlighting the Role of Innovation and Technology: The research emphasizes the critical role of innovation and technology in advancing sustainable design. The examination of case studies featuring smart building technologies and innovative design solutions demonstrates how these advancements can enhance environmental performance and operational efficiency. By showcasing examples like The Edge's smart technology integration and The Cactus Dome's energy-efficient systems, the study underscores the importance of incorporating technological innovations to achieve sustainability goals. This contribution encourages further exploration and adoption of new technologies in the field of sustainable design.

Promoting Education and Awareness: The research highlights the significance of educational programs and outreach initiatives

in promoting sustainability. The case study of The Eden Project, which integrates educational components to raise awareness about environmental conservation, underscores the role of education in fostering a culture of sustainability. By emphasizing the value of educational outreach, the research contributes to the field by advocating for increased awareness and engagement with sustainable design practices. This helps to build a more informed and environmentally conscious community of designers, architects, and the public.

Integrating Theoretical Frameworks: The research integrates Sustainable Development Theory and Design Theory to provide a robust theoretical framework for understanding sustainable interior design. This integration enriches the discourse on how sustainability principles can be applied within the context of interior design, offering a structured approach to analyzing and implementing sustainable practices. The theoretical contributions of the research provide a foundation for future studies and guide practitioners in aligning their design strategies with broader sustainability goals.

Encouraging Collaboration and Partnerships: The study underscores the importance of collaboration and partnerships in achieving sustainable design goals. By examining how interdisciplinary collaboration can lead to more effective and comprehensive sustainability solutions, the research promotes a collaborative approach to design. This contribution supports the field by advocating for stronger partnerships between architects, engineers, suppliers, and other stakeholders, leading to more integrated and successful sustainable design outcomes.

5.2.1. Theoretical Contributions

The research into sustainable interior design has made several important theoretical contributions, enriching the academic discourse and providing a robust framework

for understanding and advancing sustainable design principles. These contributions include:

Integration of Theoretical Frameworks:

The research effectively integrates Sustainable Development Theory and Design Theory to offer a comprehensive theoretical framework for sustainable interior design. Sustainable Development Theory emphasizes the need for environmental, social, and economic sustainability, providing a holistic perspective on how design practices can align with broader sustainability goals. Design Theory, on the other hand, focuses on the principles and processes involved in creating functional and aesthetically pleasing spaces. By combining these theories, the research offers a nuanced understanding of how sustainable design principles can be applied in interior design, bridging the gap between theoretical ideals and practical applications.

Development of Sustainable Design Principles:

The study contributes to the development and refinement of principles specific to sustainable interior design. It clarifies how concepts such as resource efficiency, biophilic design, and energy performance can be translated into actionable design strategies. This theoretical contribution provides a clearer understanding of how these principles interact and how they can be integrated into design practice to achieve environmental and occupant-focused goals.

Exploration of Theoretical Constructs in Practice:

The research explores how theoretical constructs, such as biophilic design and smart technology integration, manifest in real-world projects. By analyzing case studies like The Eden Project and The Edge, the study illustrates how these theoretical concepts are applied in practice, offering insights into their effectiveness and limitations. This exploration enhances the theoretical understanding of how design theories can be operationalized and tested in various contexts.

Contribution to Sustainability Discourse:

The research contributes to the broader

discourse on sustainability by providing a detailed analysis of how interior design practices can support sustainable development goals. It addresses key issues such as environmental impact reduction and the role of innovation, contributing to a deeper understanding of how design practices can contribute to sustainability. This theoretical contribution helps to shape future research directions and policy discussions related to sustainable design.

5.2.2. Practical Contributions

The research also makes several significant practical contributions to the field of sustainable interior design, offering valuable insights and guidance for practitioners, designers, and stakeholders. These contributions include:

Implementation of Sustainable Design Strategies:

The research provides practical guidance on implementing effective sustainable design strategies. By analyzing successful case studies such as Google's Bay View Campus and The Bullitt Center, the study identifies key strategies and best practices that can be applied in real-world projects. This practical guidance helps designers and architects adopt and integrate sustainable practices, improving the overall sustainability of their projects.

Addressing Challenges and Barriers:

The study identifies common challenges and barriers faced in implementing sustainable design, such as balancing aesthetics with functionality and managing client expectations. By offering practical solutions and strategies to overcome these challenges, the research supports practitioners in navigating the complexities of sustainable design. This practical contribution provides actionable insights for overcoming obstacles and achieving successful design outcomes.

Encouraging Technological Innovation:

The research highlights the role of technological innovation in enhancing sustainability,

showcasing examples such as smart building systems and energy-efficient technologies. By emphasizing the benefits of integrating technology into design practices, the study encourages practitioners to explore and adopt innovative solutions that can improve building performance and achieve sustainability goals.

Promoting Education and Awareness: The research underscores the importance of educational programs and outreach initiatives in promoting sustainable design practices. By examining successful educational and outreach efforts, such as those at The Eden Project, the study emphasizes the role of education in raising awareness and fostering a culture of sustainability. This practical contribution supports the development of educational programs and initiatives that can enhance understanding and engagement with sustainable design.

Supporting Collaboration and Partnerships: The study highlights the importance of collaboration and partnerships in achieving sustainable design goals. By examining how interdisciplinary collaboration can lead to more effective sustainability solutions, the research advocates for stronger partnerships between architects, engineers, suppliers, and other stakeholders. This practical contribution encourages a collaborative approach to design, leading to more integrated and successful sustainable design outcomes.

5.3. Final Reflections

As the study on "Sustainable Interior Design: Strategies for Eco-Friendly Spaces" draws to a close, it is important to reflect on the journey undertaken, the insights gained, and the broader implications of the research. The process of exploring sustainable interior design has been both enlightening and challenging, offering valuable lessons and raising important considerations for future work in this field.

Embracing Sustainability as a Core Design Principle

One of the key reflections from this study is the recognition of sustainability as an essential and integral aspect of interior design. The research has demonstrated that sustainable design is not merely a trend but a necessary approach to addressing environmental challenges and promoting the well-being of occupants. Through the detailed analysis of case studies such as Google's Bay View Campus, The Edge in Amsterdam, and The Bullitt Center in Seattle, it is evident that sustainable design practices can be successfully integrated into diverse projects, yielding significant benefits in terms of energy efficiency, resource conservation, and occupant satisfaction.

The Power of Innovative Design Solutions

The exploration of innovative design solutions has highlighted the transformative potential of creativity and technology in advancing sustainability. Projects like The Eden Project and The Cactus Dome showcase how imaginative architectural approaches and the use of cutting-edge technologies can lead to groundbreaking achievements in sustainable design. These examples underscore the importance of pushing the boundaries of traditional design practices and embracing new methods and materials to create eco-friendly spaces that are both functional and aesthetically pleasing.

Challenges and Opportunities in Sustainable Interior Design

The research has also brought to light the various challenges faced by designers, clients, and stakeholders in implementing sustainable practices. Balancing aesthetics with functionality, managing budget constraints, and navigating regulatory requirements are some of the common obstacles encountered. However, these challenges also present opportunities for growth and innovation. By understanding and addressing these issues, the design community can develop more effective strategies, foster collaboration, and drive the

adoption of sustainable practices on a larger scale.

The Role of Education and Awareness

Education and awareness have emerged as crucial components in promoting sustainable interior design. The case studies and interviews conducted as part of this research emphasize the need for ongoing education and outreach efforts to inform and inspire stakeholders about the importance and benefits of sustainability. Programs and initiatives that educate designers, clients, and the public about sustainable practices can play a pivotal role in fostering a culture of environmental stewardship and driving positive change within the industry.

Looking Ahead: Future Directions and Recommendations

As we look to the future, it is clear that the journey towards sustainable interior design is an evolving and dynamic process. The findings from this research provide a foundation for further exploration and innovation. Future work should continue to investigate the latest developments in sustainable materials, technologies, and design methodologies. Additionally, there is a need for more comprehensive and longitudinal studies to assess the long-term impacts of sustainable design on environmental performance and occupant well-being.

In conclusion, the research on sustainable interior design has underscored the critical importance of integrating eco-friendly practices into the built environment. The insights gained from this study offer valuable guidance for designers, policymakers, and stakeholders committed to advancing sustainability. By embracing innovative solutions, overcoming challenges, and prioritizing education, the design community can make significant strides towards creating a more sustainable and resilient future. The journey is ongoing, and the reflections from this research serve as a testament to the potential for positive change through thoughtful and sustainable design practices.

References

- Abdullah, S. N. C., Khalil, N., Haron, S. N., Hamid, M. Y., & Yan, Y. (2023). Unveiling the impact of sustainable interior design criteria on hotel's operational performance effectiveness and user's hedonic consumption. *International Journal of Sustainable Construction Engineering and Technology*, 14(3), 154-165.
- Abdel Qader, M. (2023). Modern Trends in Green Interior Architecture Applications with Smart Systems. *International Journal of Modern Agriculture and Environment*, 3(1), 58-70.
- Abraham, A. O., Oluwatayo, A. A., & Nduka, D. M. (2023). Embracing nature in the built environment: Evaluation of biophilic design patterns in selected resorts. *Journal of A Sustainable Global South*, 7(2), 27.
- Aithal, P. S., & Aithal, S. (2022). Opportunities and Challenges for Green and Eco-Friendly Nanotechnology in Twenty-First Century. In *Sustainable nanotechnology: Strategies, products, and applications* (pp. 31-50).
- Ajabli, H., Zoubir, A., Elotmani, R., Louzazni, M., Kandoussi, K., & Daya, A. (2023). Review on Eco-friendly insulation material used for indoor comfort in building. *Renewable and Sustainable Energy Reviews*, 185, 113609.
- Alfuraty, A. B. (2020, July). Sustainable environment in interior design: Design by choosing Sustainable Materials. In *IOP conference series: materials science and engineering* (Vol. 881, No. 1, p. 012035). IOP Publishing.
- Alimin, N. N., Pertiwi, E. G., & Purwaningrum, L. (2021, November). Establishing sustainable habits of students in Green School Bali through green interior design. In *IOP Conference Series: Earth and*

- Environmental Science (Vol. 905, No. 1, p. 012075). IOP Publishing.
- Almalki, F. A., Alsamhi, S. H., Sahal, R., Hassan, J., Hawbani, A., Rajput, N. S., ... & Breslin, J. (2023). Green IoT for eco-friendly and sustainable smart cities: future directions and opportunities. *Mobile Networks and Applications*, 28(1), 178-202.
- Almusaed, A., Almssad, A., Alasadi, A., Yitmen, I., & Al-Samarrae, S. (2023). Assessing the role and efficiency of thermal insulation by the "Bio-Green Panel" in enhancing sustainability in a built environment. *Sustainability*, 15(13), 10418.
- Ashour, M., Mahdiyar, A., & Haron, S. H. (2021). A comprehensive review of deterrents to the practice of sustainable interior architecture and design. *Sustainability*, 13(18), 10403.
- Chupin, J. P., Hazbei, M., & Pelchat, K. A. (2021). Three types of architectural educational strategies (AES) in sustainable buildings for learning environments in Canada. *Sustainability*, 13(15), 8166.
- Cole, L. B., Lindsay, G., & Akturk, A. (2020). Green building education in the green museum: design strategies in eight case study museums. *International Journal of Science Education, Part B*, 10(2), 149-165.
- Gupta, S. (2020). Green library: A strategic approach to environmental sustainability. *International Journal of Information Studies and Libraries*, 5(2).
- Han, H., Quan, W., Lho, L. H., & Yu, J. (2020). Eco-design of airport buildings and customer responses and behaviors: Uncovering the role of biospheric value, reputation, and subjective well-being. *Sustainability*, 12(23), 10059.
- Hartini, L., Wibawa, B., Situmorang, R., & Raissa, F. (2020, December). Interior design of national library with environmentally sustainability materials. In IOP Conference Series: Materials Science and Engineering (Vol. 1007, No. 1, p. 012004). IOP Publishing.
- Hou, H., & Wu, H. (2021). Tourists' perceptions of green building design and their intention of staying in green hotel. *Tourism and Hospitality Research*, 21(1), 115-128.
- Iftekhhar, M. W., & Prajapati, R. J. (2023). Impact of Virtual Reality and Eco-Friendly Interior Design Tool on Carbon Emission. *Journal of Online Engineering Education*, 14(1s), 32-40.
- Ismaeil, E. M., & Sobaih, A. E. E. (2022). Enhancing healing environment and sustainable finishing materials in healthcare buildings. *Buildings*, 12(10), 1676.
- Jaffe, S. B., Fleming, R., Karlen, M., & Roberts, S. H. (2020). Sustainable design basics. John Wiley & Sons.
- Khan, N., Jhariya, M. K., Raj, A., Banerjee, A., & Meena, R. S. (2021). Eco-designing for sustainability. In *Ecological intensification of natural resources for sustainable agriculture* (pp. 565-595).
- Kineber, A. F., Massoud, M. M., Hamed, M. M., & Qaralleh, T. J. O. (2023). Exploring sustainable interior design implementation barriers: a partial least structural equation modeling approach. *Sustainability*, 15(5), 4663.
- LI, A., & BINTI HARON, S. H. (2024). EVALUATION OF SUSTAINABLE ENVIRONMENT-FRIENDLY INTERIOR DECORATION DESIGN FROM THE PERSPECTIVE OF LOW-CARBON ECONOMY. *Journal of the Balkan Tribological Association*, 30(2).
- Łatka, J. F., & Świąciak, M. (2021). The Obverse/Reverse Pavilion: An Example of a Form-Finding Design of Temporary, Low-Cost, and Eco-Friendly Structure. *Buildings*, 11(6), 226.
- Mahmood, D., Javid, N., Ahmed, G., Khan, S., & Monteiro, V. (2021). A review on

- optimization strategies integrating renewable energy sources focusing uncertainty factor—Paving path to eco-friendly smart cities. *Sustainable Computing: Informatics and Systems*, 30, 100559.
- Mariotti, N., Bonomo, M., Fagiolari, L., Barbero, N., Gerbaldi, C., Bella, F., & Barolo, C. (2020). Recent advances in eco-friendly and cost-effective materials towards sustainable dye-sensitized solar cells. *Green Chemistry*, 22(21), 7168-7218.
- Mohamad, Z. Z., Yang, F. C., Charles Ramendran, S. P. R., Rehman, M., Nee, A. Y. H., & Yin, Y. C. (2020). Embedding eco-friendly and smart technology features in affordable housing for community happiness in Malaysia. *GeoJournal*, 1-15.
- Mwanzu, A., Bosire-Ogechi, E., & Odero, D. (2023). Green initiatives towards environmental sustainability: Insights from libraries in Kenya. *IFLA Journal*, 49(2), 298-314.
- Park, J. E., & Kang, E. (2022). The Mediating Role of Eco-Friendly Artwork for Urban Hotels to Attract Environmental Educated Consumers. *Sustainability*, 14(7), 3784.
- Pavate, V., Deshmukh, V. D., Kolekar, A., Mendapara, A., Patil, S., & Amrutatti, S. (2024). Green Building and Energy-Efficient Design. *Journal of Environmental Engineering and Studies*, 33-52.
- Rasheed, H. (2023). Modern Trends in Green Interior Architecture Applications with Smart Systems. *International Journal of Advances Engineering and Civil Research*, 3(2), 1-14.
- Rojas Quezada, C., & Jorquera, F. (2021). Urban fabrics to eco-friendly blue-green for urban wetland development. *Sustainability*, 13(24), 13745.
- Su, X. (2021). Function of nano-decorative materials in interior design and the application of ecological and environmental protection concepts. *Ferroelectrics*, 580(1), 268-282.
- Umoh, A. A., Adefemi, A., Ibewe, K. I., Etukudoh, E. A., Ilojiyanya, V. I., & Nwokediegwu, Z. Q. S. (2024). Green architecture and energy efficiency: a review of innovative design and construction techniques. *Engineering Science & Technology Journal*, 5(1), 185-200.
- Usman, M., Rofcanin, Y., Ali, M., Ogbonnaya, C., & Babalola, M. T. (2023). Toward a more sustainable environment: Understanding why and when green training promotes employees' eco-friendly behaviors outside of work. *Human Resource Management*, 62(3), 355-371.
- Wang, W., Yang, H., & Xiang, C. (2023). Green roofs and facades with integrated photovoltaic system for zero energy eco-friendly building—A review. *Sustainable Energy Technologies and Assessments*, 60, 103426.
- Warren, S., Moran, S., & McGuffin, K. (2022). Planning to Incorporate Energy Conservation Practices, Renewable Energy Production Systems, and Eco-friendly Building Design Practices to Support Sustainability in US Public Schools. In *Handbook of Smart Energy Systems* (pp. 1-26). Cham: Springer International Publishing.
- Xu, Y., Guo, Y., Jumani, A. K., & Khatib, S. F. (2021). Application of ecological ideas in indoor environmental art design based on hybrid conformal prediction algorithm framework. *Environmental Impact Assessment Review*, 86, 106494.
- Xue, X., Qiu, M., Li, Y., Zhang, Q. M., Li, S., Yang, Z., ... & Fan, S. (2020). Creating an eco-friendly building coating with smart subambient radiative cooling. *Advanced Materials*, 32(42), 1906751.
- Yu, J., Ariza-Montes, A., Hernández-Perlines, F., Vega-Muñoz, A., & Han, H. (2020). Hotels' eco-friendly physical environment as nature-based solutions

for decreasing burnout and increasing job satisfaction and performance. *International Journal of Environmental Research and Public Health*, 17(17), 6357.

Yousrallah Mohamed, D. (2020). Achieving Sustainable Tourism Development of Hotels' Interior Design Using (Ecolodge (as one of the Environmental Design Solutions.

Zitars, J., Spadafore, B., Coulombe, S., Riemer, M., Dreyer, B. C., & Whitney, S. (2021). Understanding the psycho-environmental potential functions of a green building to promote employee health, wellbeing and productivity: A theoretical perspective. *Building and Environment*, 205, 108268.